



# CATALOGUE STAINLESS STEEL SANITARY





# STAINLESS STEEL SANITARY

The sanitary room is important, Not only because most of us spend large parts of our day in (public) sanitary areas, but equally, because in many ways they are a building's signature. It is one of the rooms in which one can create character, and an experience of something extra.

It is also a room where quite particular requirements are made in terms of functionality, user-friendliness, design and aesthetics. The sanitary room needs to meet complex needs, while at the same time being capable of withstanding very intensive use over time without deterioration in quality. So, stainless steel is the obvious choice of material for this purpose. A unique material with special properties, and advantages.

Through our extensive product portfolio, we can provide a wide variety of product solutions for different projects. These include: healthcare, prisons, public sanitary rooms and industrial projects.

This is one of the reasons why we are so often the supplier of choice for ambitious projects with no compromise.









# Cooperation with Intra

Since June 1, 2015, the business unit 'Stainless Steel Sanitary' started a strategic cooperation with Intra. Intra is the market leader in Scandinavia in the field of stainless steel sanitary (accessories) and kitchen sinks.

The first visible step, is the expansion of our product portfolio. One example is our new line of stainless steel wash troughs. Extremely hygienic, very strong and easy to install. Elcee even has a wash trough, that has been specially developed for schools and nurseries. This product has "corner bumpers", so sharp edges do not longer exist! Perfect for, for example, kindergartens and schools.

To summarize: You can contact Elcee for even more business. Off course with the same familiar team, at the same address.



**intra**  
SCANDINAVIAN DESIGN



**AWARD FOR DESIGN EXCELLENCE**  
NORWEGIAN DESIGN COUNCIL

## A quality label

Intra has been awarded the prestigious Award for Design Excellence from the Norwegian Design Council on several occasions. This award demonstrates recognition of successful use of design to create innovative products and solutions. A stamp of quality for the company, and for the products you choose.

Intra has also received several international design awards.

**Elcee**

# Product overview

## Toilets



## Faeces wells



## Urinals & troughs



## Washbasins



## Washbasins



## Drinking fountains



## Wash troughs



## Surgical Wash troughs



## Bucket sinks & Utility sinks



## Separators & Slopsinks



## Bath and shower



## Millinox - Accessories



# Product overview

## Icon - Accessories



## Basic - Accessories



## Basic- Accessories



## Public - Accessories





# Toilets and Urinals



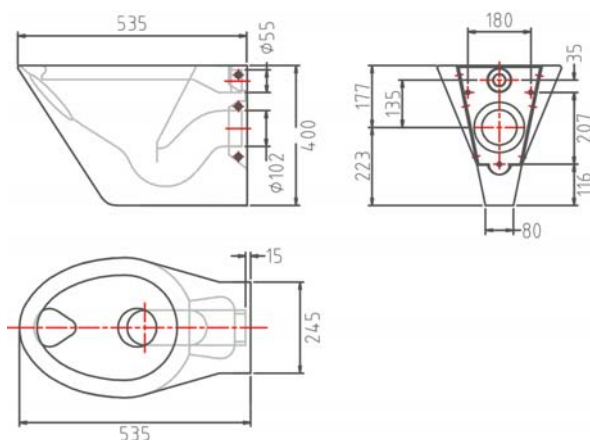


# Toilets



Elcee offers a wide range of stainless steel wall mounted hanging and floor standing toilets. For each situation we can provide an appropriate solution. For example, we have several extended models which are very suitable for disabled people. There is also a model that is especially developed for prisons. These toilets have hidden mounting points.

# Toilets



## Toilet, Elcee 40

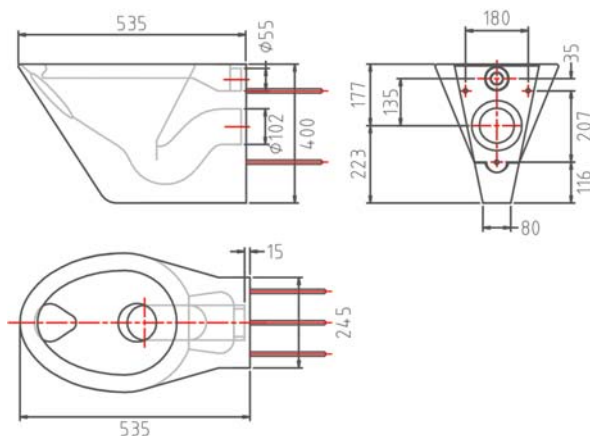
The E40 is a stainless steel, wall mounted toilet, floor standing model. This toilet can be mounted on any standard cistern with a euronorm connection, but also directly from the plumbing. This toilet is also available with toilet seat holes(E40G). The distance of these holes is 160 mm.

Material: Stainless steel AISI 304.

### ARTICLE NUMBERS:

E40 - 1100020 - E40 SV\*: 1105195

E40G - 1100358 - E40G SV\*:1105196

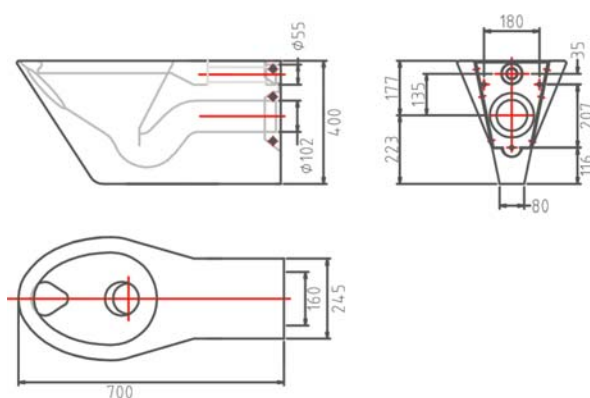


## Toilet, Elcee 40 VB

The E40 VB is a stainless steel, wall mounted toilet, floor standing model. This model has welded nuts on the back and is mounted "through the wall" with threaded rods. With this way of mounting the points are not visible or accessible for the user. Material: Stainless steel AISI 304.

### ARTICLE NUMBER:

E40VB - 1100022 - E40VB SV\*:1105197



## Toilet, Elcee 40-700

The E 40-700 is a stainless steel, wall mounted toilet, floor standing model. This model can be mounted on any stand-ard cistern with a euronorm connection, but also directly from the plumbing. The E40-700 is an elongated model and therefore suitable for disabled people. This toilet is also available with toilet seat holes (40-700G). The distance of these holes is 160 mm. Material: Stainless steel AISI 304.

### ARTICLE NUMBERS:

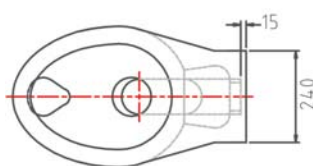
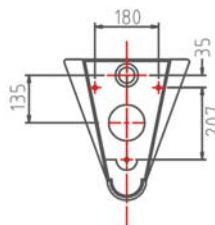
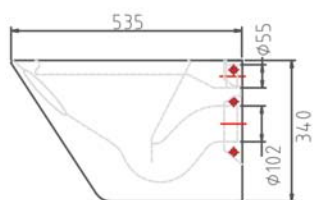
E40-700 - 1100359

E40-700G - 1100360

\*ARTICLE INCL. FOAM FILLING



# Toilets



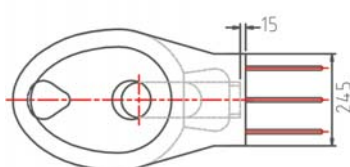
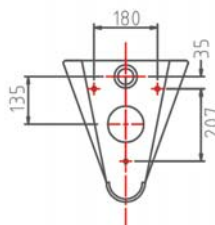
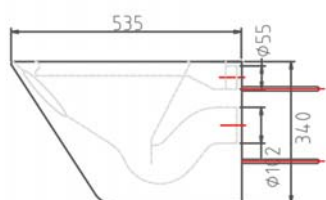
## Toilet, Elcee 41

The E41 is a stainless steel, wall mounted toilet, hanging model. This toilet can be mounted on any standard cistern with an euronorm connection, but also directly from the plumbing. This toilet is also available with toilet seat holes. The distance of these holes is 160 mm. Material: Stainless steel AISI 304.

### ARTICLE NUMBERS:

E41 - 1100260 - E41 SV\*: 1105198

E41G - 1100366 - E41G SV\*: 1105199

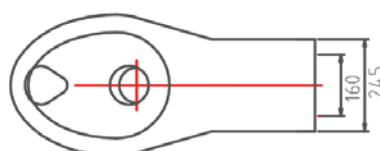
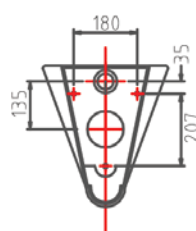
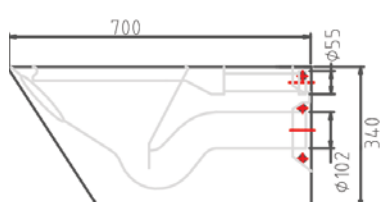


## Toilet, Elcee 41 VB

The E41 VB is a stainless steel, wall mounted toilet, hanging model. This model has welded nuts on the back and is mounted "through the wall" with threaded rods. This way the mounting points are not visible or accessible for the user. Material: Stainless steel AISI 304.

### ARTICLE NUMBER:

E41VB - 1100283 - E41VB SV\*: 1105200



## Toilet, Elcee 41-700

The E 41-700 is a stainless steel, wall mounted toilet, hanging model. This model can be mounted on any standard cistern with a euronorm connection, but also directly from the plumbing. The E41-700 is an elongated model and therefore suitable for disabled people. This toilet is also available with toilet seat holes. (E41-700G) The distance of these holes is 160 mm. Material: Stainless steel AISI 304.

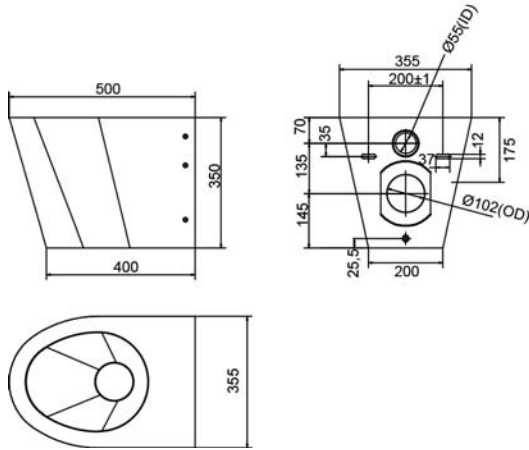
### ARTICLE NUMBERS:

E41-700 - 1100367

E41-700G - 1100368

\*ARTICLE INCL. FOAM FILLING

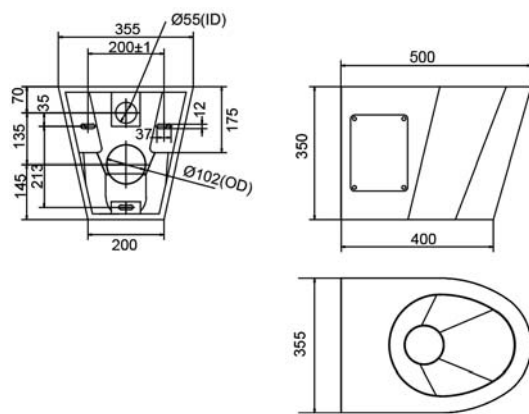
# Toilets



## Toilet, Elcee 42

The E42 is a stainless steel, wall mounted toilet, hanging model. This model can be mounted on any standard cistern with a euronorm connection, but also directly from the plumbing. Material: Stainless steel AISI 304.

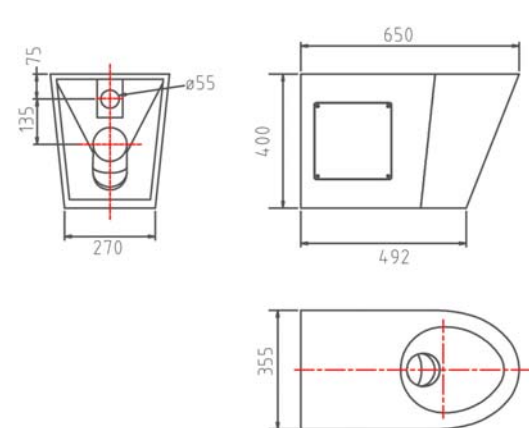
ARTICLE NUMBER: .....  
E42 - 1105228



## Toilet, Elcee 43

The E43 is a stainless steel, wall mounted toilet, hanging model with an inspection hatch at the side.

ARTICLE NUMBER: .....  
E43 - 1100425



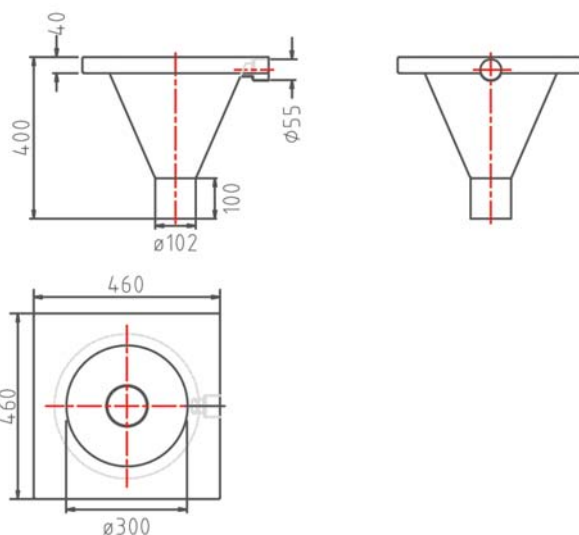
## Toilet, Elcee 44

The E44 is a stainless steel, wall mounted toilet, floor standing model with an inspection hatch at the side.

ARTICLE NUMBER: .....  
E44 - 1100414



# Toilets

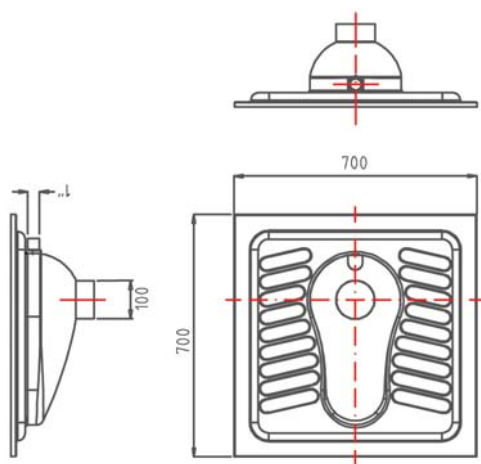


## Funnel toilet, Elcee 51

This is a solution for a toilet in for example a prison cell.  
This model can be casted into concrete and is highly vandal resistant. Material: Stainless steel AISI 304.

ARTICLE NUMBER:

E51 - 1100026



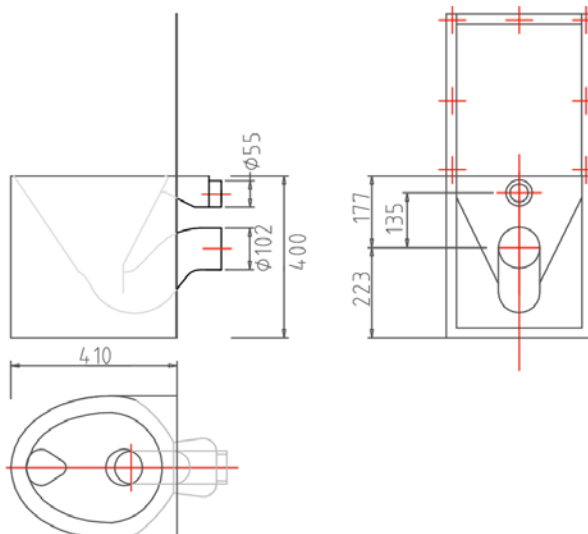
## Squatting pan, Elcee 70

Stainless steel squat pan, executed with ribbed foot plates for better stability. Material: Stainless steel AISI 304.

ARTICLE NUMBER:

E70 - 1100477

# Toilets



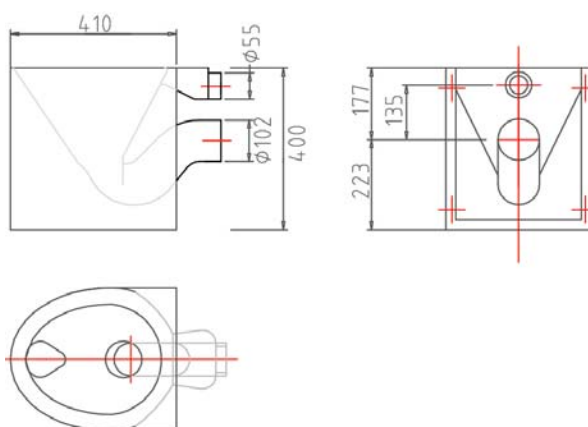
## Prison type toilet, Elcee 150 (P/S)

This prison type toilet is designed to be strong, safe and vandal proof. It's available with a P- or S-siphon. On the splash back are 7 nuts (welded). The toilet is mounted through the wall with 7 threaded rods. Material: Stainless steel AISI 304.

### ARTICLE NUMBERS:

E150P - 1100110 - E150P SV\*:1105218

E150S - 1100115 - E150S SV\*:1105219



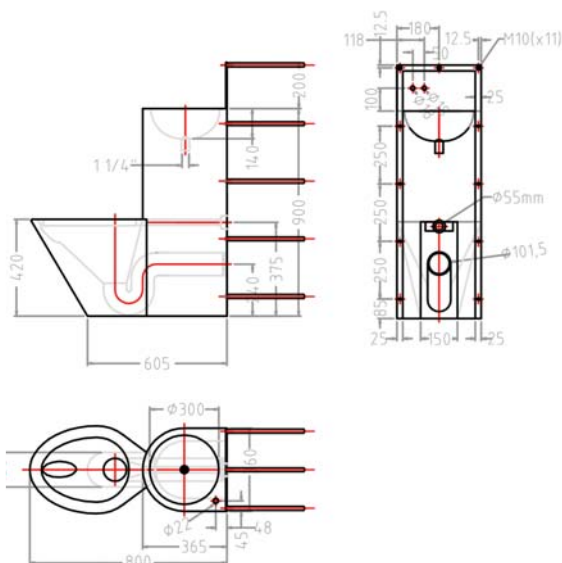
## Prison type toilet, Elcee 151 (P/S)

This prison type toilet is designed to be strong, safe and vandal proof. It's available with a P- or S-siphon. On the back of the toilet are 4 nuts (welded). The toilet is mounted through the wall with 4 threaded rods. Material: Stainless steel AISI 304.

### ARTICLE NUMBERS:

E151P - 1100270 - E151P SV\*:1105221

E151S - 1100271 - E151S SV\*:1105220



## Combination toilet, Elcee 160

This combination of a drinking fountain and a toilet is often applied at (youth) detention centers, solitary cells, prisons and police stations. This combination toilet is very suitable for small spaces and is mounted through the wall with 11 threaded rods. This combination toilet is available in different versions. Material: Stainless steel AISI 304. Available in different versions, toilet left from the middle (E160L), toilet right from the middle (E160R) en centrally (E160).

### ARTICLE NUMBERS:

E160 - 1100207 - E160SV\*: 1105201

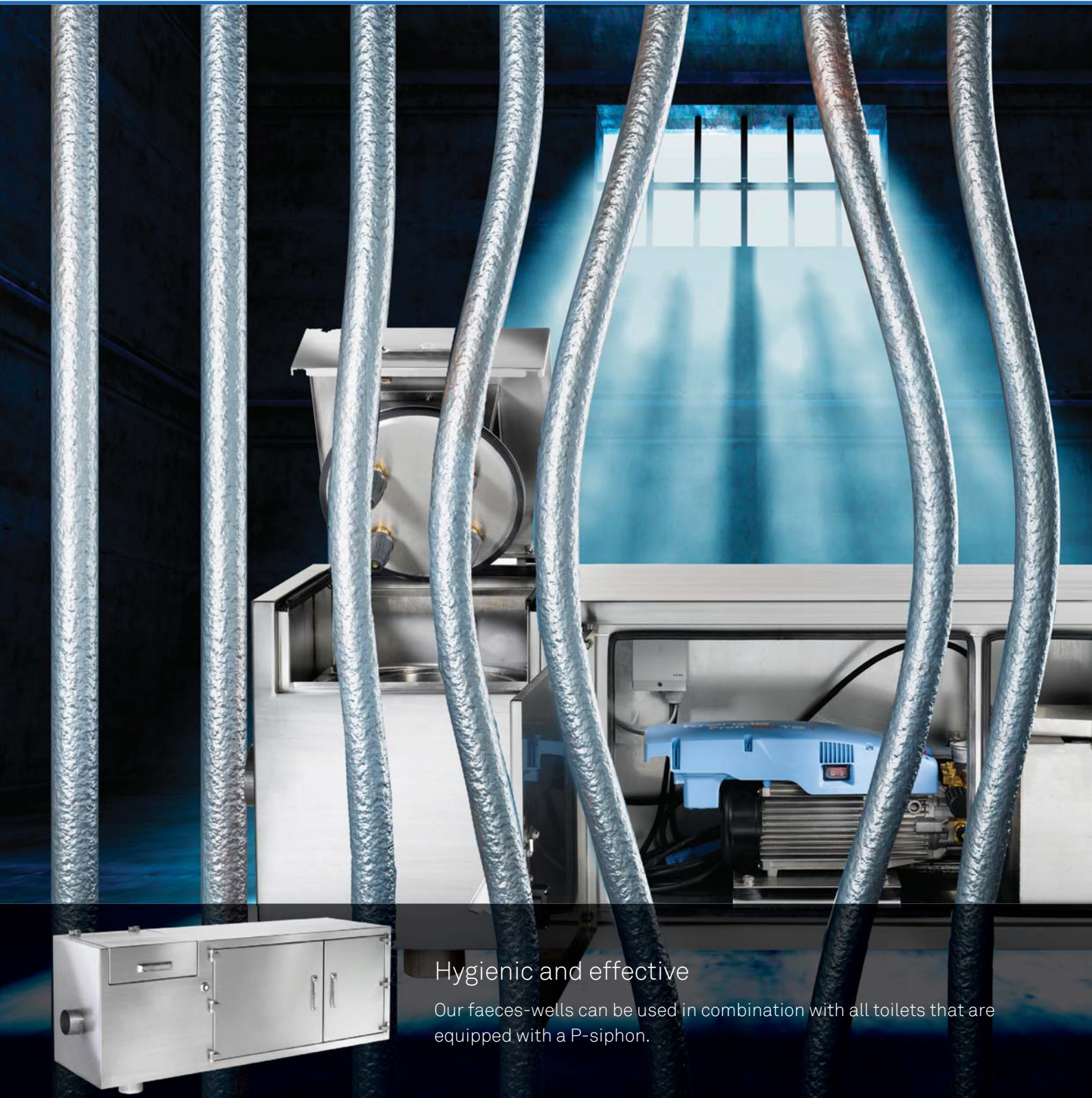
E160L - 1100361 - E160L SV\*: 1105202

E160R - 1100362 - E160R SV\*: 1105203

\*ARTICLE INCL. FOAM FILLING



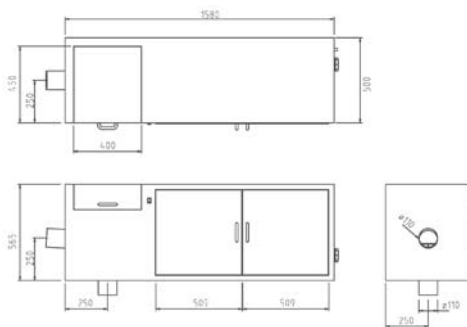
# Faeces wells



Hygienic and effective

Our faeces-wells can be used in combination with all toilets that are equipped with a P-siphon.

# Faeces wells

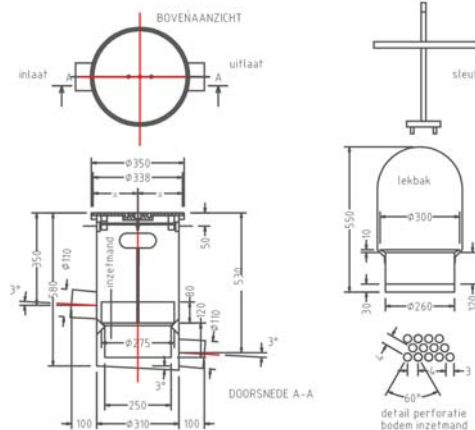


## Faeces well, Elcee 144

This unit consists of a faeces well, a high-pressure pump and a stainless steel housing and is equipped with an air- and watertight hinged lid, which makes the complete unit waterproof. The inner body of the faeces well has no sharp edges or corners, what prevents cumulation of dirt. For the recovery of faeces and foreign objects, the faeces unit is equipped with an extractable strainer basket with perforated holes of Ø4 mm. There are 4 spraying nozzles installed on the lid which clean the faeces well before it is opened. Foreign objects will remain in the strainer basket. There is the possibility to add a detergent during the flushing process. We place an isolation layer between the inner body and the outside housing for sound reduction. Material: Stainless steel AISI 304.

ARTICLE NUMBER:

E144 - 1100452

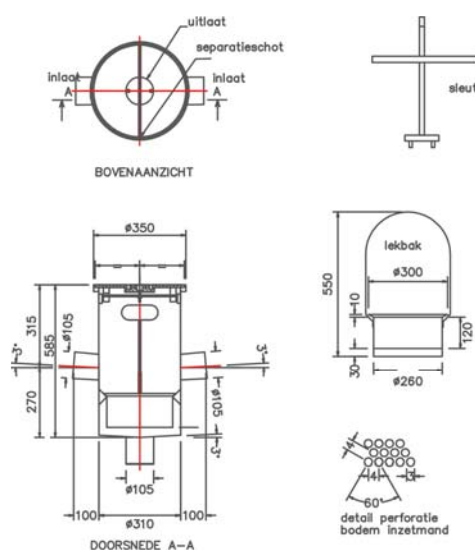


## Faeces well, Elcee 145

The faeces well Elcee 145 can be used in combination with all toilets with a P-siphon. This type is equipped with a single inlet, which can be placed in different angles to make it suitable for your specific connection. The lid is equipped with an internal locking mechanism which can only be opened with our specific key. Material: Stainless steel AISI 304.

ARTICLE NUMBER:

E145 - 1100255



## Faeces well, Elcee 147

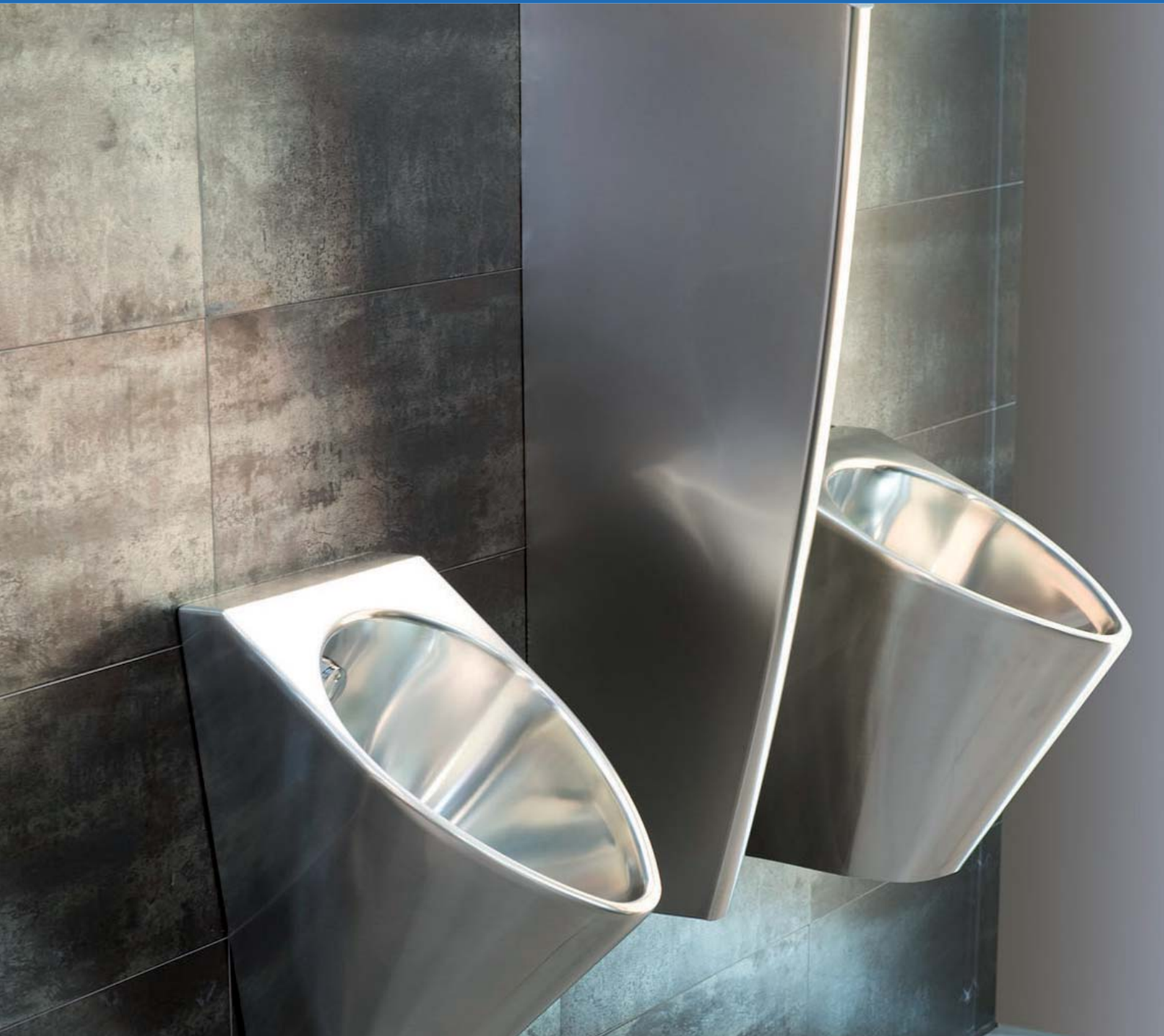
The faeces well Elcee 147 can be used in combination with all toilets with a P-siphon. This type is equipped with two inlets, which can be placed in different angles to make it suitable for our specific connection. The lid is equipped with an internal locking mechanism which can only be opened with our specific key. Material: Stainless steel AISI 304.

ARTICLE NUMBER:

E147 - 1100294



# Urinal troughs - Urinals

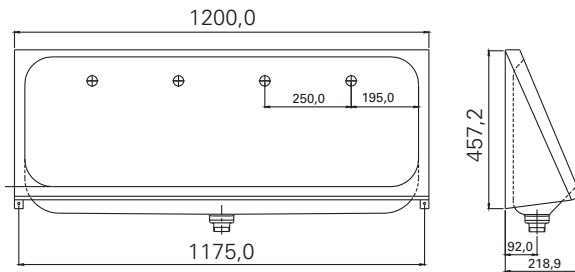


## Tough and durable urinals and urinal troughs

Our urinals and urinal troughs have a vandal-resistant front cover, which conceals the outlet, and are supplied with or without flush. The elegant, but tough wall divider is a perfect addition.



# Urinal troughs - Urinals



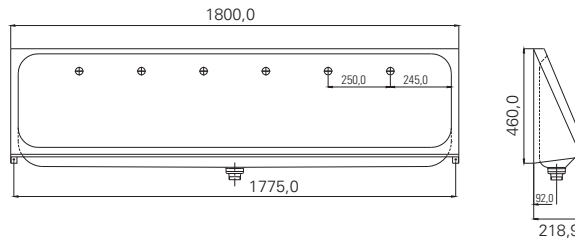
## Urinal trough, Elcee URP120STD

This urinal trough is wall mounted. Fully pressed urinal trough with three alternative 1/2" inlet connections, two concealed and one visible. Waste hole centered. Supplied with 1 1/2" grated waste and four flush nozzels. Also available with thermal flushing unit (URP120S). Material: Stainless steel AISI 304.

### ARTICLE NUMBERS:

URP120STD - 1100500

URP120S STD - 1100501



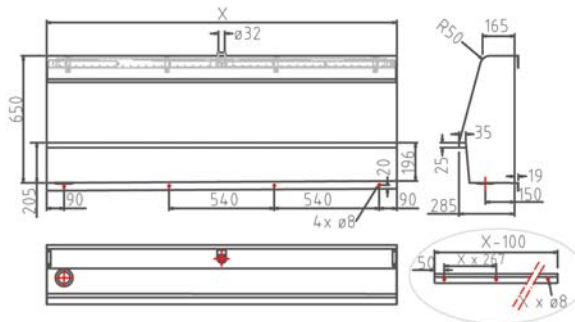
## Urinal trough, Elcee URP180STD

This urinal trough is wall mounted. Fully pressed urinal trough with three alternative 1/2" inlet connections, two concealed and one visible. Waste hole centered. Supplied with 1 1/2" grated waste and six flush nozzels. Also available with thermal flushing unit (URP180S STD). Material: Stainless steel AISI 304.

### ARTICLE NUMBERS:

URP180 STD - 1100502

URP180S STD - 1100503



## Urinal trough, Elcee 303

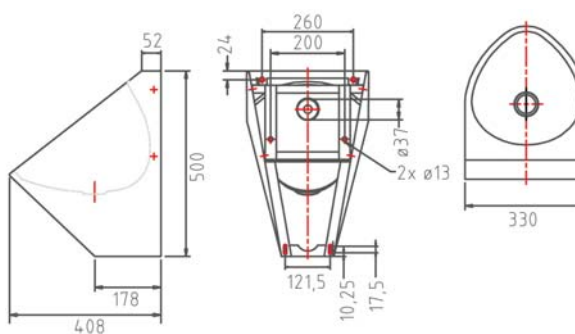
This urinal trough is wall mounted. Outlet on the left- or right side. Standard lengths are 1.200, 1.800 and 2.400 mm. Material: Stainless steel AISI 304.

### ARTICLE NUMBERS:

E303 1.200 mm - 1103016 (left) - 1103017 (right)

E303 1.800 mm - 1103018 (left) - 1103019 (right)

E303 2.400 mm - 1103020 (left) - 1103021 (right)



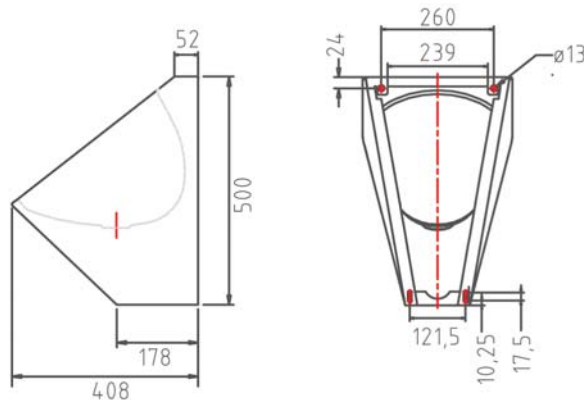
## Urinal, Elcee 347

Suitable for public areas and easy to mount. To ensure a quick and easy installation this urinal is supplied with both a 1/2" outside thread as well as an euronorm connection for urinals. Material: Stainless steel AISI 304.

### ARTICLE NUMBER:

E347 - 1100009

# Urinal troughs - Urinals

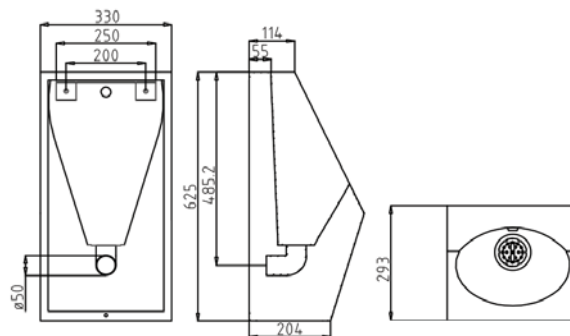


## Waterless urinal, Elcee 348

This urinal, based on the E347, doesn't need water to be flushed, and will be still fresh and clean. This is realized by three things: Key Valve, Aromatic indicator and Cleanser. A part of the key valve is a silicon membrane which is shaped in such a way that liquids will pass, but nasty odours will not. For this NO chemicals are needed. Above the key valve is an aromatic indicator. It spreads a nice aroma during direct usage and also indicates the life span of the membrane. When the indicator is empty, it is time to switch the key valve. The cleanser can be used daily, to spray the inside of the urinal. This way, a biofilm will attach to the inside of the urinal which prevents the urine from attaching to the Stainless steel. Of course it will also disinfect and clean the urinal. Material: Stainless steel AISI 304.

ARTICLE NUMBER:

E348 - 1100005



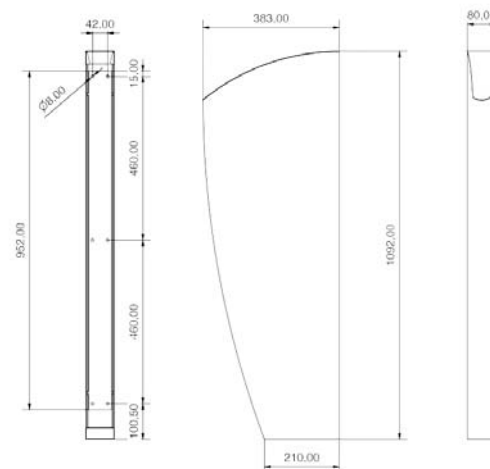
## Urinal, Elcee 349

Suitable for public areas and easy to mount. To ensure a quick and easy installation this urinal is supplied with a ½" outside thread inlet. Material: Stainless steel AISI 304.

ARTICLE NUMBERS:

E349 - 1100085

E349S - 1100086



## Wall divider, Elcee 50i

Urinal divider in stainless steel, satin finish. Supplied complete with concealed fixing. Material: Stainless steel AISI 304.

ARTICLE NUMBER:

E50i - 1100087

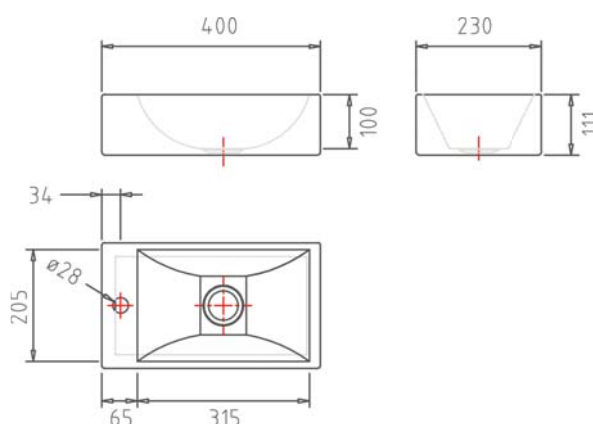
# Washbasins



Elcee provides a wide range of stainless steel washbasins. Some models has hidden mounting points and are therefore very suitable for prisons.



# Washbasins

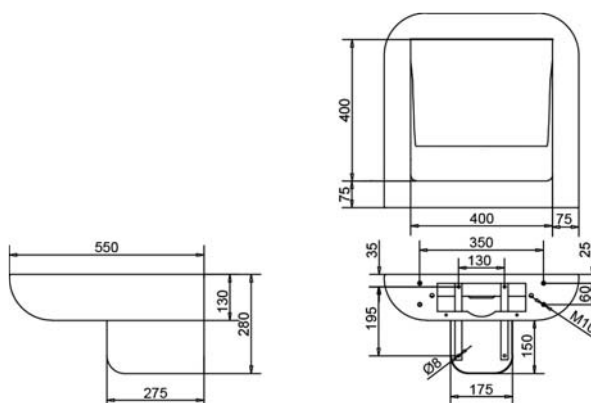


## Washbasin, Elcee 213

Stainless steel washbasin suitable for the smallest spaces. The basin is supplied without mounting holes. These holes can easily be drilled on location and gives the customer the choice whether the tap hole should be situated on the left or on the right side. Material: Stainless steel AISI 304.

ARTICLE NUMBER:

E213 - 1080657

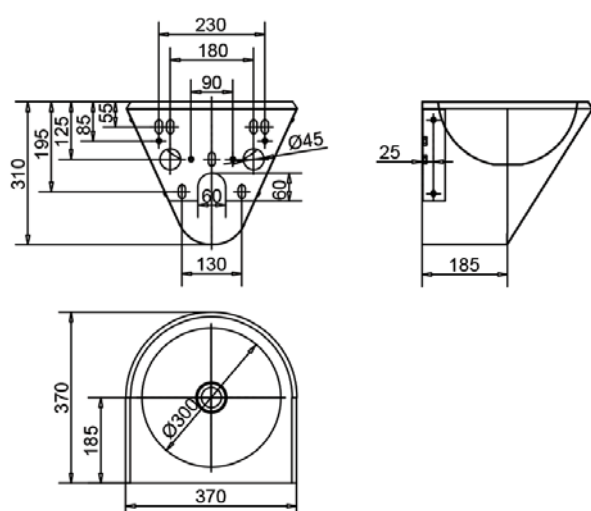


## Washbasin, Elcee 215

A solid, fully closed, anti-ligature Stainless steel washbasin, suitable for the disabled. Including 1 1/2" waste plug and without overflow. This washbasin is also available with a tap hole. Material: Stainless steel AISI 304.

ARTICLE NUMBER:

E215 - 1085311



## Washbasin, Elcee 217

A solid, fully closed, anti-ligature Stainless steel washbasin, suitable for smaller spaces. Including 1 1/4" waste plug and without overflow. Material: Stainless steel AISI 304.

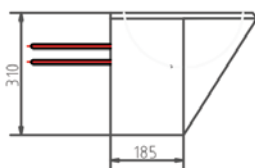
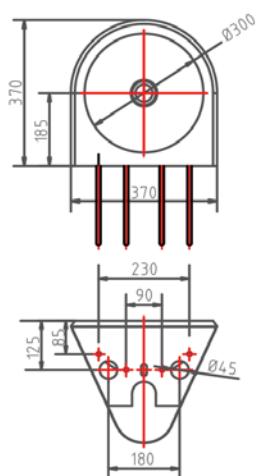
ARTICLE NUMBER:

E217 - 1080654 - E217 SV\*:1085319

\*ARTICLE INCL. FOAM FILLING



# Washbasins

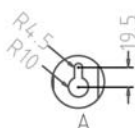
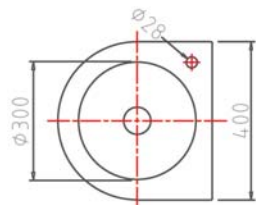
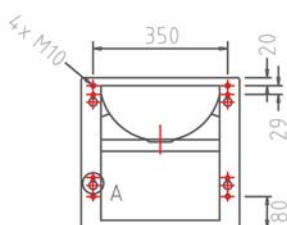
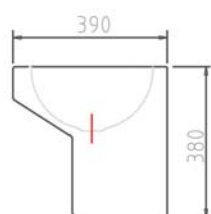


## Washbasin, Elcee 217 VB

A solid, fully closed, stainless steel washbasin, suitable for smaller spaces. This model has welded nuts on the back and is mounted "through the wall" with threaded rods. This way the mounting points are not visible or accessible for the user. Including 1 1/4" waste plug, without tap hole and without overflow. Material: Stainless steel AISI 304.

ARTICLE NUMBER:

E217VB - 1080667 - E217VB SV\*:1085320

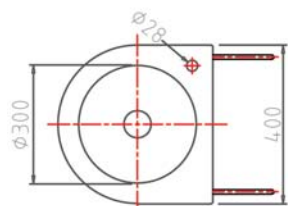
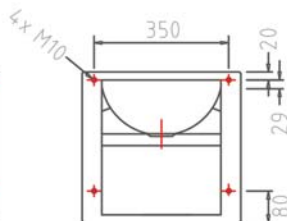
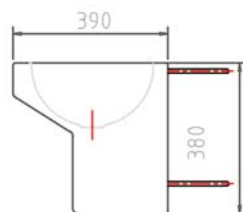


## Washbasin, Elcee 218

A solid, fully closed execution with removable hatch at the bottom. The mounting points are not visible or accessible for the user. Material: Stainless steel AISI 304.

ARTICLE NUMBER:

E218 - 1085118 - E218 SV\*: 1085321



## Washbasin, Elcee 218 VB

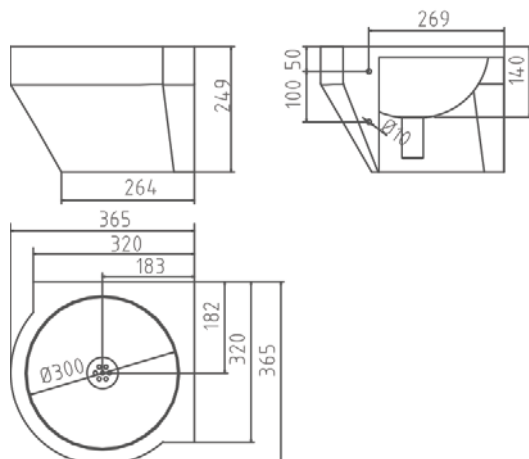
A solid, fully closed execution with removable hatch at the bottom. This model has welded nuts on the back and is mounted "through the wall" with threaded rods. This way the mounting points are not visible or accessible for the user. Material: Stainless steel AISI 304.

ARTICLE NUMBER:

E218VB - 1085264 - E218VB SV\*: 1085322

\*ARTICLE INCL. FOAM FILLING

# Washbasins

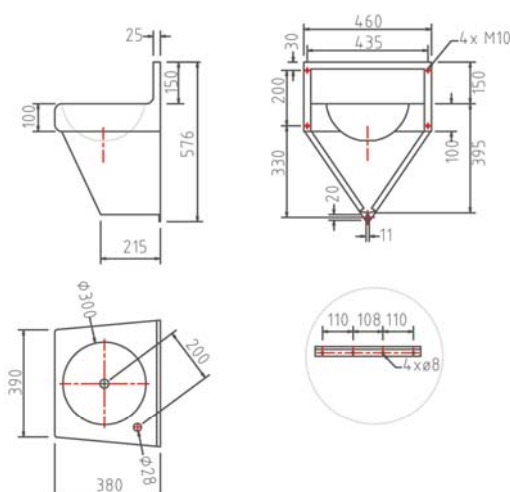


## Corner Washbasin, Elcee 222

The E222 is a solid corner washbasin with a smart design. This makes it suitable for public areas, but also for areas where there is the need for a vandal proof product. Including 1 1/4" waste plug and without overflow. Material: Stainless steel AISI 304.

ARTICLE NUMBER:

E222 - 1080350



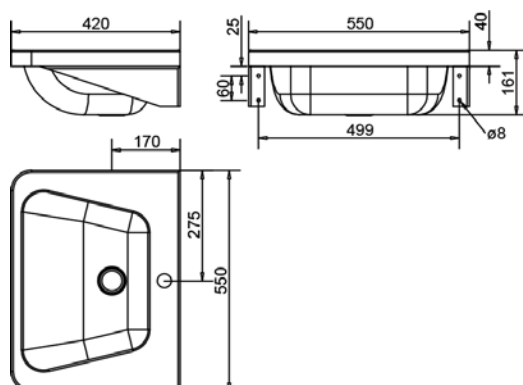
## Washbasin, Elcee 46/38

Vandal proof washbasin. Executed with splash back and removable siphon cover. This washbasin is available with and without tap hole. Including 1 1/4" waste plug and without overflow. Material: Stainless steel AISI 304.

ARTICLE NUMBERS:

E46/38 - 1080077 - E46/38 SV\*: 1085323

E46/38 ZKG - 1080076 - E46/38 SV\*: 1085324



## Washbasin, Elcee 55/42

Stainless steel washbasin with overflow. This washbasin is available with and without tap hole. Including 1 1/2" waste plug and without overflow. Material: Stainless steel AISI 304.

ARTICLE NUMBERS:

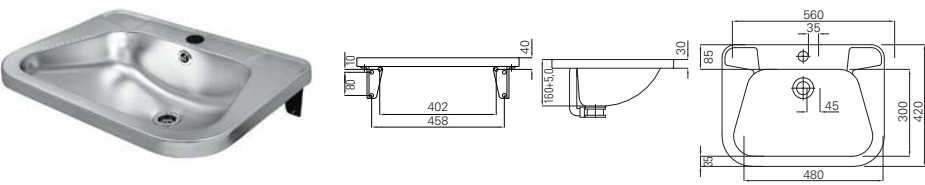
E55/42 - 1080352

E55/42 ZKG - 1080353

\*ARTICLE INCL. FOAM FILLING

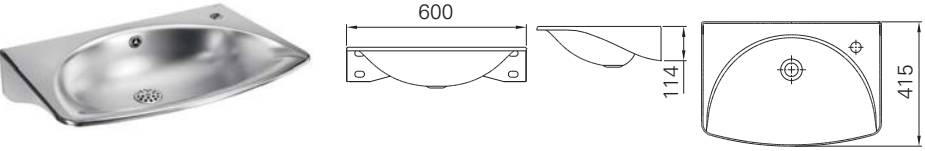


# Washbasins



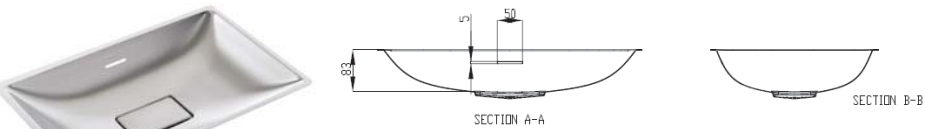
**Washbasin, Elcee RS72STD**  
Basin for wall mounting in stainless steel. Supplied with brackets, waste and overflow kit.

ARTICLE NUMBER: .....  
RS72-02 - 1080469



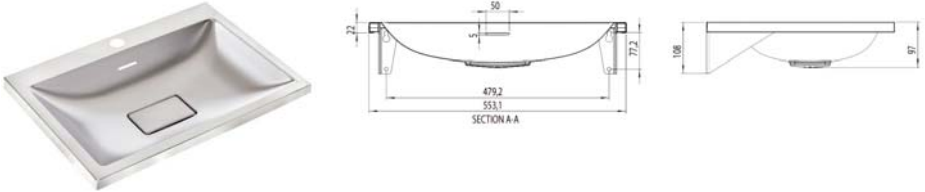
**Washbasin, Elcee ED1ROL**  
Basin for wall mounting in stainless steel. Supplied with a tap hole, 1 1/4" plug and chain waste, overflow arrangement and integrated wall bracket. Also available without overflow and tap hole (ED1).

ARTICLE NUMBERS: .....  
ED1 - 1080473  
ED1ROL - 1080476



**Washbasin, Elcee Icon 1**  
Icon basin, IC1, for flush- and under mounting. Supplied with overflow hole.

ARTICLE NUMBER: .....  
IC1-32 - 1080481



**Washbasin, Elcee Icon 4**  
Icon basin, IC4, for wall. Supplied with integrated wall brackets, overflow and tap hole. Satin finish.

ARTICLE NUMBER: .....  
IC4-32 - 1080483

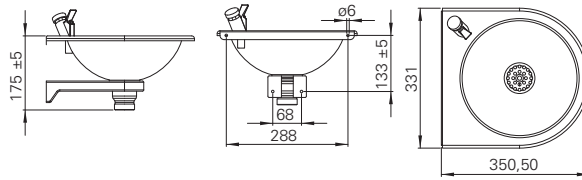
# Drinking fountains



## Fresh water whenever you like!

Popular drinking fountains with eye-catching design. The fountains are made from stainless steel, a durable material which is easy to clean. It makes them very suitable for locations with high-frequency use, e.g. schools, offices, airports, sporting venues/construction sites, train stations and hospitals.

# Drinking fountains

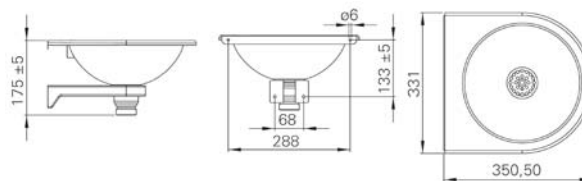


## Drinking fountain, Elcee ED2-01DF

Stainless steel washbasin suitable for the smallest spaces. Supplied with supporting brackets, grated waste and bubbler tap. Material: Stainless steel AISI 304.

ARTICLE NUMBER:

ED2-01DF - 1080470



## Drinking fountain, Elcee ED2-01

Stainless steel washbasin suitable for the smallest spaces. Supplied with supporting brackets and grated waste, but without tap hole. Material: Stainless steel AISI 304.

ARTICLE NUMBER:

ED2-01 - 1080471



## Durable and practical

Wash troughs made to withstand daily use in school and kindergartens, in sports arenas and industrial buildings. For increased safety, several of our models are supplied with “bumpers” which cover sharp corners. If you don’t need bumpers, we also have simpler variants. Some of our models have centered waste holes and are made from fully pressed stainless steel with no unhygienic joints.



# Wash troughs

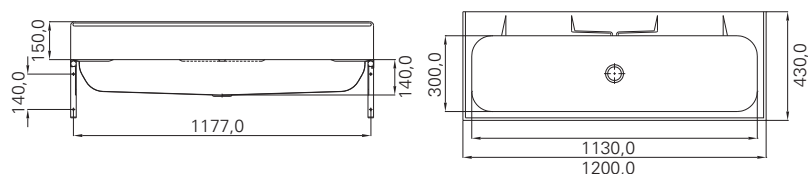


Many different types to choose from:

- Available in the dimensions 1200 mm, 1800 mm and 2400 mm;
- With or without tap holes and plumbing;
- Available with multiple tap models;
- Do you need a wash trough with specific features? Elcee also provides specials!

For situations where extra safety is required, we have wash troughs with bumpers. These wash troughs are particularly well-suited for kindergartens and schools.

# Wash troughs



## Wash trough, Elcee P120V

Fully pressed wash trough for wall mount. This means optimum hygiene. Supplied with wall brackets, wall panel and 1 1/2" grated waste. Also available without wall panel and with or without tap holes.

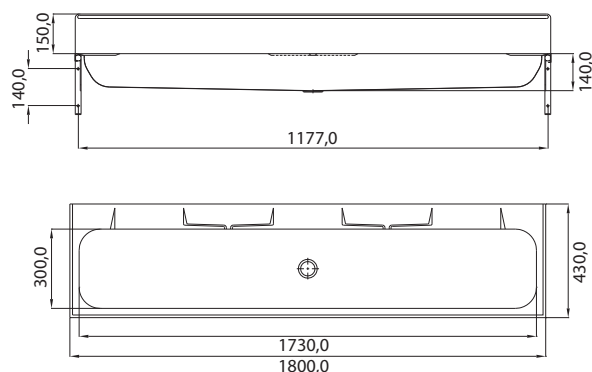
### ARTICLE NUMBERS:

P120V ZKG - 1080450

P120V MKG - 1080451

P120 ZKG - 1080454

P120 MKG - 1080455



## Wash trough, Elcee P180V

Fully pressed wash trough for wall mount. This means optimum hygiene. Supplied with wall brackets, wall panel and 1 1/2" grated waste. Also available without wall panel and with or without tap holes.

### ARTICLE NUMBERS:

P180V ZKG - 1080452

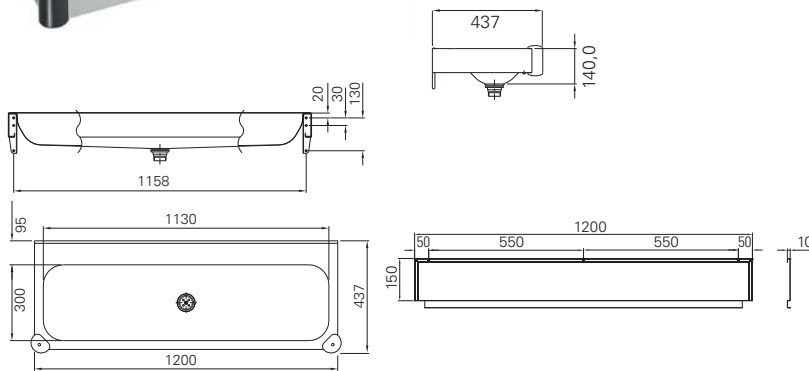
P180V MKG - 1080453

P180 ZKG - 1080456

P180 MKG - 1080457

\*ZKG: WITHOUT Tap hole  
\*MKG: WITH Tap hole

# Wash troughs



## Wash trough, Elcee P121V

Fully pressed wash trough for wall mount. This means optimum hygiene. Supplied with wall brackets, wall panel and 1 1/2" grated waste. Very suitable for example schools, because they are executed with 'corner protectors'. Also available without wall panel and with or without tap holes.

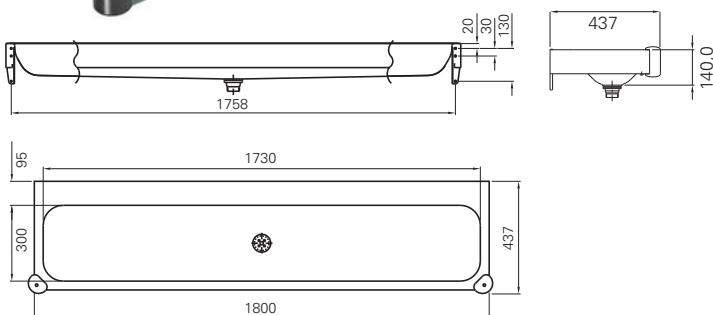
### ARTICLE NUMBERS:

P121V ZKG - 1080458

P121V MKG - 1080459

P121 ZKG - 1080460

P121 MKG - 1080461



## Wash trough, Elcee P181V

Fully pressed wash trough for wall mount. This means optimum hygiene. Supplied with wall brackets, wall panel and 1 1/2" grated waste. Very suitable for example schools, because they are executed with 'corner protectors'. Also available without wall panel and with or without tap holes.

### ARTICLE NUMBERS:

P181V ZKG - 1080462

P181V MKG - 1080463

P181 ZKG - 1080464

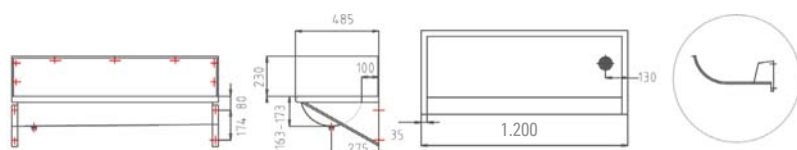
P181 MKG - 1080465



# Wash troughs



Elcee 240 with tapholes (KG)



## Wash trough, Elcee 240 (1.200 mm)

Suitable for wall mounting. Supplied with wall brackets, wall panel and 1 1/2" grated waste. Outlet on the left- or right side. This wash trough is available without tap holes (ZKG) or with tap holes and pumpling (KG).

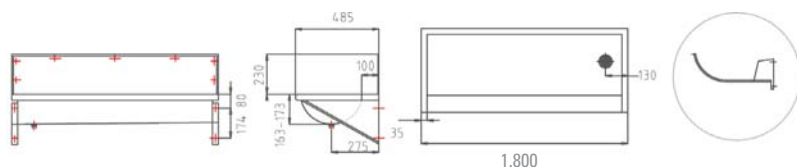
Material: Stainless steel AISI 304

### ARTICLE NUMBERS:

E240 ZKG - 1080279 (left) - E240 ZKG - 1080280 (right)  
E240 KG - 1080211 (left) - E240 KG - 1080212 (right)



Elcee 240 with tap holes (KG)



## Wash trough, Elcee 240 (1.800 mm)

Suitable for wall mounting. Supplied with wall brackets, wall panel and 1 1/2" grated waste. Outlet on the left- or right side. This wash trough is available without tap holes (ZKG) or with tap holes and pumpling (KG).

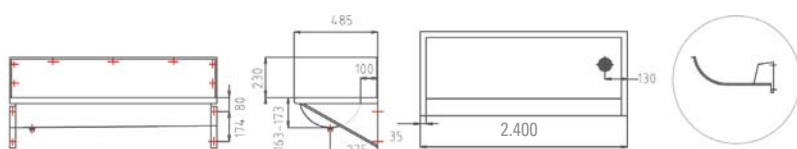
Material: Stainless steel AISI 304.

### ARTICLE NUMBERS:

E240 ZKG - 1080281 (left) - E240 ZKG - 1080282 (right)  
E240 KG - 1080221 (left) - E240 KG - 1080222 (right)



Elcee 240 without tap holes (ZKG)



## Wash trough, Elcee 240 (2.400 mm)

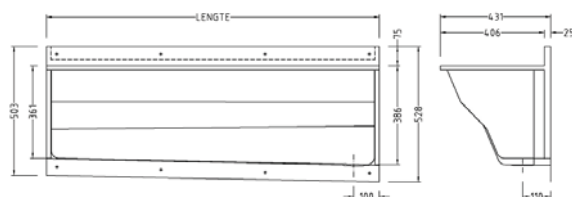
Suitable for wall mounting. Supplied with wall brackets, wall panel and 1 1/2" grated waste. Outlet on the left- or right side. This wash trough is available without tap holes (ZKG) or with tap holes and pumpling (KG).

Material: Stainless steel AISI 304.

### ARTICLE NUMBERS:

E240 ZKG - 1080283 (left) - E240 ZKG - 1080284 (right)  
E240 KG - 1080231 (left) - E240 KG - 1080232 (right)

# Surgical wash troughs



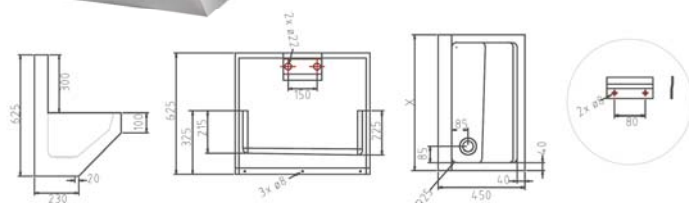
## Surgical wash trough, Elcee 290

This wash trough is especially designed for surgical operation rooms and has rounded corners on the inside. The outlet can be situated on the right- or left hand side. The standard length is 1.500 mm. Other lengths on request. Material: Stainless steel AISI 304.

### ARTICLE NUMBERS:

E290L - 1081062

E290R - 1081063



## Hygienic wash trough, Elcee 293

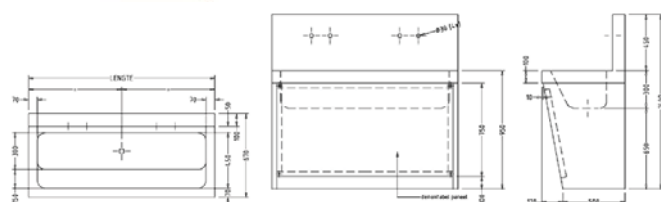
This wash trough has rounded corners to provide a hygienic working situation. The back splash with tap holes is standard included. The complete wash trough is made in one piece. Outlet on the left-hand side. Material: Stainless steel AISI 304.

### ARTICLE NUMBERS:

E293 700 - 1085299

E293 1400 - 1085295

E293 2100 - 1085297



## Surgical wash trough, Elcee 295

This standing wash trough is especially designed for surgical operation rooms and has rounded corners on the inside. The outlet is situated in the middle. The Elcee 295 is equipped with a removable front panel, to access the plumbing connections. The standard length is 1.500 mm. Other lengths on request. Material: Stainless steel AISI 304.

### ARTICLE NUMBER:

E295 - 1085104

# Bucket sinks & Utility sinks

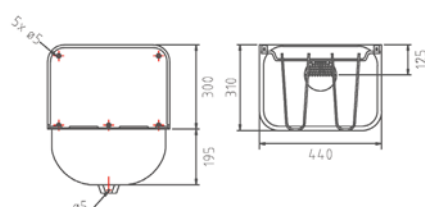


## Easy to install

Practical and hygienic sinks with easy fixing system that ensures stable, secure attachment to the wall. A wall panel protects the wall from water staining.



# Bucket sinks

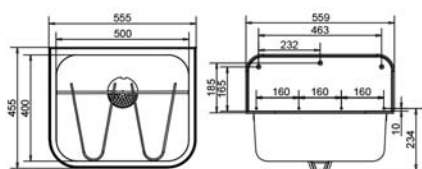


## Bucket sink, Elcee 4431

Supplied with splash back and fitted with a dismountable swing back bucket tray. Including 1 1/2" waste plug. Material: Stainless steel AISI 304.

ARTICLE NUMBER:

E4431 - 1080121



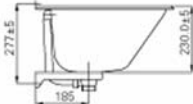
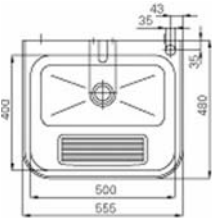
## Bucket sink, Elcee 5645

Supplied with splash back and fitted with a removable swing back bucket tray. Including 1 1/2" waste plug. Material: Stainless steel AISI 304.

ARTICLE NUMBER:

E5645 - 1080110

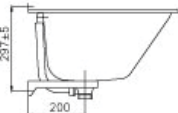
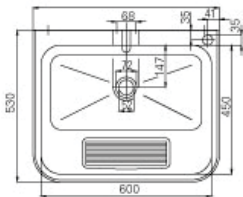
# Utility sinks



## Utility sink, Elcee VK50S1

Wall hung utility sink in stainless steel. Supplied with fixing brackets and a waste plug . Executed with a ribbed front plate and a 1½” waste. Width: 500mm. Material: Stainless steel AISI 304.

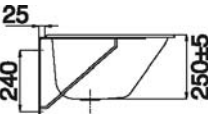
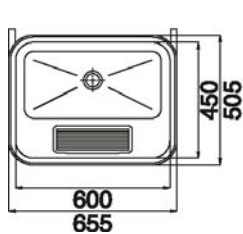
ARTICLE NUMBER: .....  
VK50S1 - 1080466



## Utility sink, Elcee VK60S1

Wall hung utility sink in stainless steel. Supplied with fixing brackets and a waste plug. Executed with a ribbed front plate and a 1½” waste. Width: 600mm. Material: Stainless steel AISI 304.

ARTICLE NUMBER: .....  
VK60S1 - 1080467



## Utility sink, Elcee VK60LB

Wall hung utility sink in stainless steel. Supplied with delta consoles, a waste plug and a ball valve. Executed with a ribbed front plate and a 1½” waste. Width: 600mm. Material: Stainless steel AISI 304.

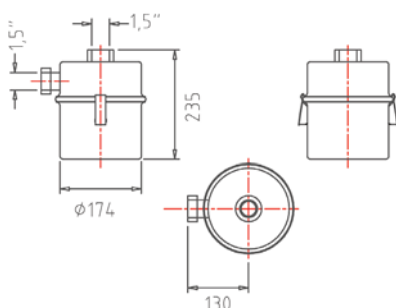
ARTICLE NUMBER: .....  
VK60LB - 1080468

# Separators



## Separators

Elcee offers two kind of separators, a sand- and a plaster-separator. These also have the function of a siphon.

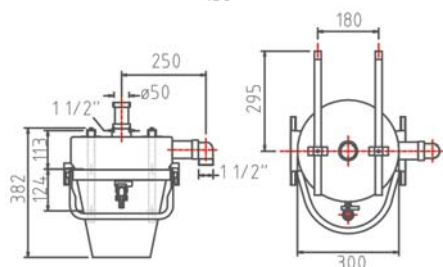


### Sand catcher, Elcee 220

The sand catcher has a capacity of 3,5 litres and is ideal for filtering sand from water. It is easy to mount directly under a washbasin or a wash trough. Material: Stainless steel AISI 304.

ARTICLE NUMBER:

E220 - 1080020



### Plaster separator, Elcee 255

The plaster separator has a working volume of 9 litres and is ideal for filtering plaster residue from water. It is executed with a removable container which can be easily detached for emptying and cleaning. Material: Stainless steel AISI 304.

ARTICLE NUMBER:

E255 - 1080010



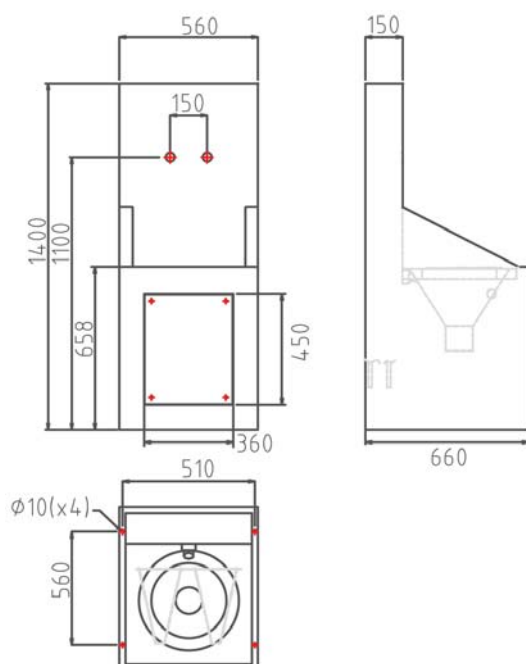
# Slopsinks



## Easy maintenance

These special slopsinks are provided with a bucket tray and flushing rim. Because of the wide water outlet, the water can go away easily.

# Slopsinks

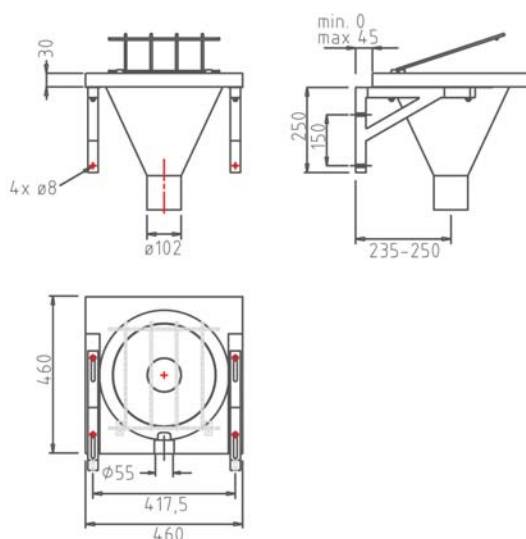


## Slopsink, Elcee 317

This slopsink is completely pre-fitted with a tap, a built-in flushing system and a mechanical push button on the side. Executed with bucket tray, flush rim and 100 mm siphon. At the front side, there is a removable panel, which makes the slopsink easy to access for maintenance and installation. Material: Stainless steel AISI 304.

ARTICLE NUMBER:

E317 - 1080045



## Slopsink, Elcee 318

Wall hanging model. Executed with removable swing back bucket tray, flush rim and 100 mm siphon. Standard equipped with an euronorm flush connection. The slopsink is 0 - 40 mm adjustable from wall to user to optimize the user friendliness. Material: Stainless steel AISI 304.

ARTICLE NUMBER:

E318 - 100700



# Bath and shower

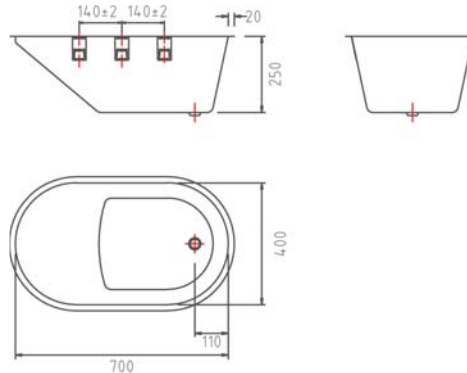


## Bath & Shower

Elcee offers several stainless steel products for in the bathroom, like shower trays, bathtubs, mirrors and shelves.



# Bath and shower

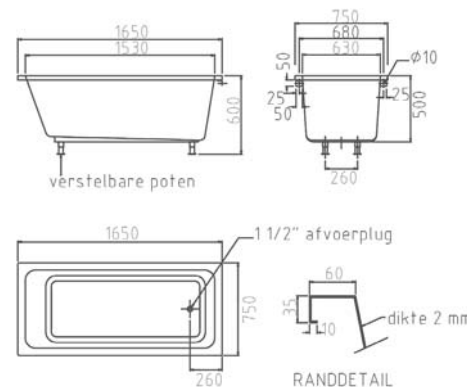


## Baby bath, Elcee 380

Suitable for flat surface mounting, with six mounting clamps. Without overflow, with plug and chain. Material: Stainless steel AISI 304.

ARTICLE NUMBER:

E380 - 1085180

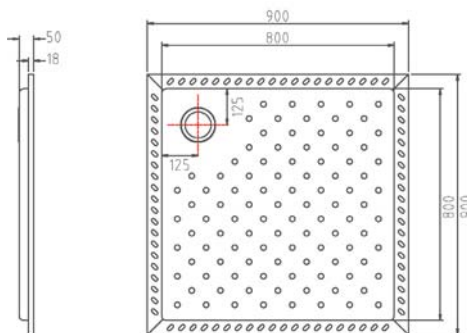


## Bathtub, Elcee 390

Solid Stainless steel bathtub, executed with 4 adjustable feet. It is also possible to order the bath tub with side and front panels. Material: Stainless steel AISI 304.

ARTICLE NUMBER:

E390 - 1080096



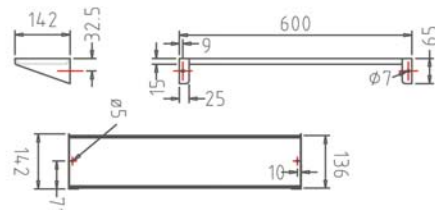
## Shower tray, Elcee 450

The shower tray is executed with rounded corners on the inside, for a better hygiene. This shower tray has two standard dimensions. 700 x 700 mm (E450 700) and 900 x 900 mm (E450 900) Material: Stainless steel AISI 304.

ARTICLE NUMBERS:

E450 700 - 1080145

E450 900 - 1085253



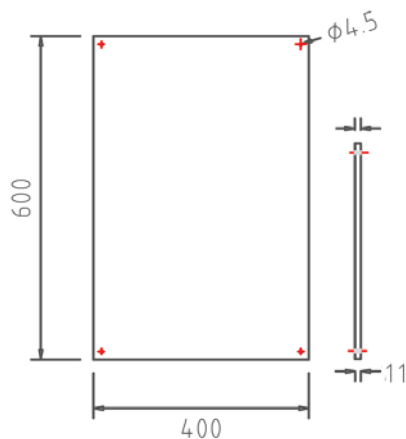
## Shelf, Elcee 6014

Stainless steel shelf. Standard length is 600 mm. Other lengths available on request. Material: Stainless steel AISI 304.

ARTICLE NUMBER:

E6014 - 1080086

# Bath and shower

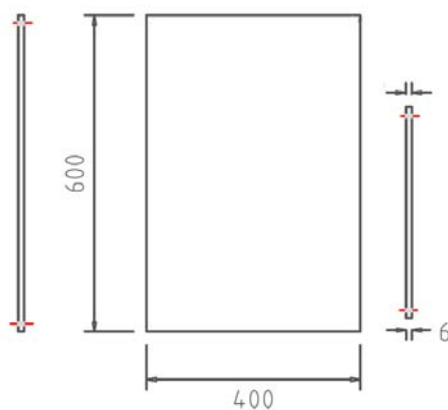


## Mirror, Elcee 6040

Stainless steel mirror in super high polished execution. Glued on 10 mm board and executed with four  $\varnothing 4,5$  mm mounting holes. Also available without mounting holes.

ARTICLE NUMBER:

E6040 - 1080080

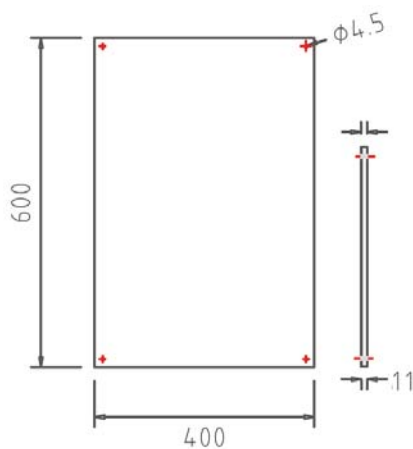


## Mirror, Elcee 6040 VM (hidden mounting)

Stainless steel mirror in super high polished execution, with bended edges. This execution is provided with a plastic backplate with 4 mounting holes, so there are no visible mounting points on the mirror. Stainless steel AISI 304.

ARTICLE NUMBER:

E6040VB - 1085343



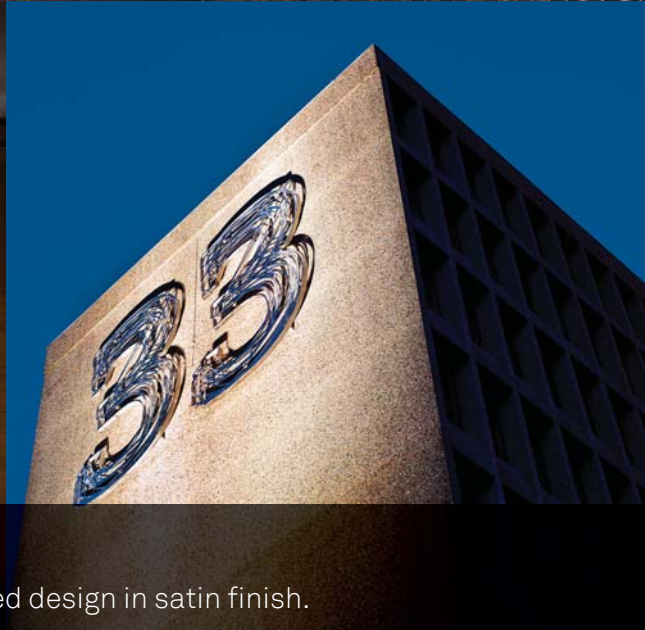
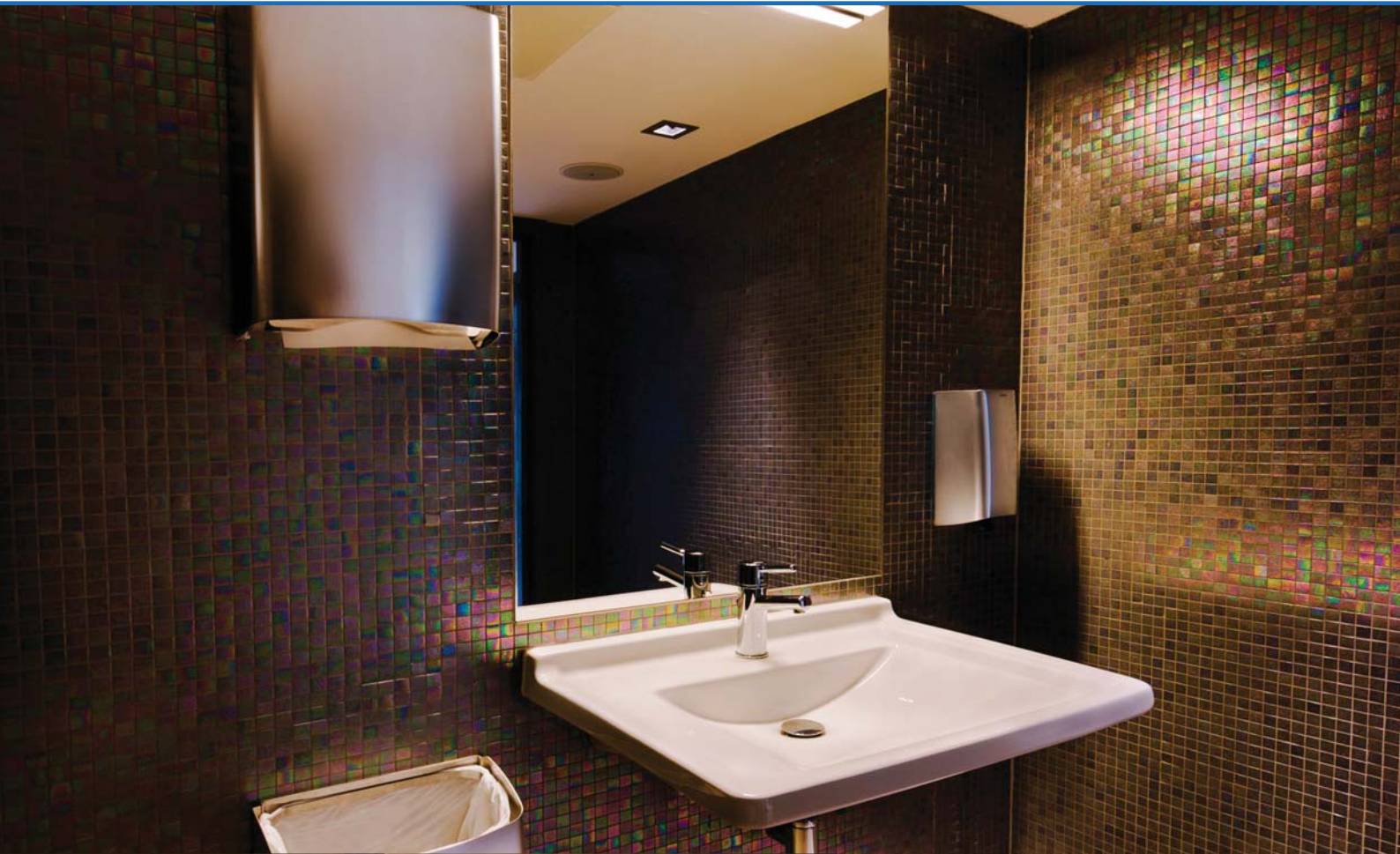
## Mirror, Elcee 6040 ZO

Stainless steel mirror in super high polished execution. This mirror is fully made of 1,5 mm stainless steel and has no 'board' at the back of the mirror. It's standard executed with four  $\varnothing 4,5$  mm mounting holes.

ARTICLE NUMBER:

E6040ZO - 1085344

# Millinox - Sanitary accessories



Design at the forefront

Exclusive, sculptural and stylish – Millinox has a double-skinned design in satin finish.



# Millinox – Sanitary accessories

*intra*

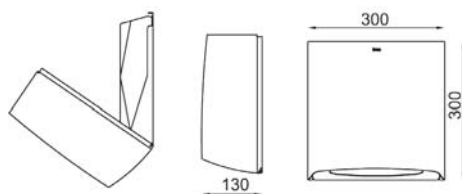


## Design at the forefront

Exclusive, sculptural and stylish – Millinox has a double-skinned design in satin finish.

The range was created by designer Odd Thorsen, one of Norway's foremost and most awarded product designers. Thorsen's systematic approach to design lets function and aesthetics play an equal role in all projects.

# Millinox - Sanitary accessories

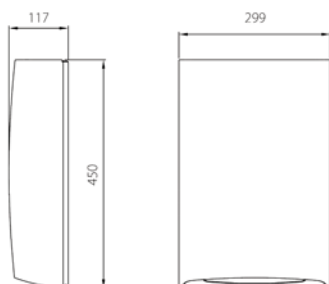


## Millinox MXPMMINI

Towel dispenser for wall mounting, in Satin finish. Suitable for all standard paper sizes. Material: Stainless steel AISI 304.

ARTICLE NUMBER:

MXPMMINI - 1180200

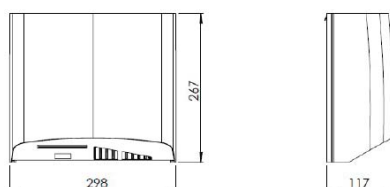


## Millinox MXP

Paper dispenser for wall mounting, in Satin Finish. Suitable for Tork express plus paper sizes. Material: Stainless steel AISI 304.

ARTICLE NUMBER:

MXP- 1180202



## Millinox MXHD ECO

Electronic hand dryer, in Satin finish. Because this dryer had an high capacity your hands will be dry in 12 sec. Material: Stainless steel AISI 304.

ARTICLE NUMBER:

MXHD ECO- 1180203



## Millinox MXSKIL

Washroom doorplate in stainless steel, Satin finish. This product is available in 3 variants. MXSKILTH for men, MXSKILTD for women and MXSKILTHC for disabled people. Material: Stainless steel AISI 304.

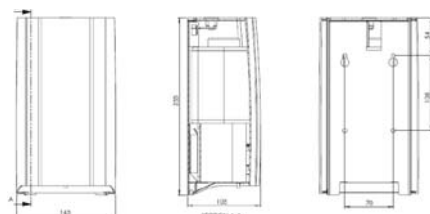
ARTICLE NUMBERS:

MXSKILTH - 1180205

MXSKILTD - 1180206

MXSKILTHC - 1180207

# Millinox - Sanitary accessories

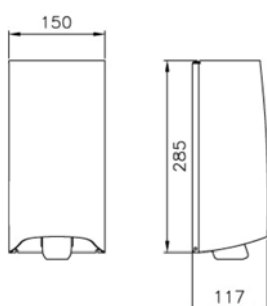


## Millinox MXSE

New! Millinox electrical, touch free soap dispenser in stainless steel Satin finish. Capacity 0,9 liter soap. Suitable for refilling. Run by 4 x 1,5 V AA batteries. Material: Stainless steel AISI 304.

ARTICLE NUMBER:

MXSE - 1180231

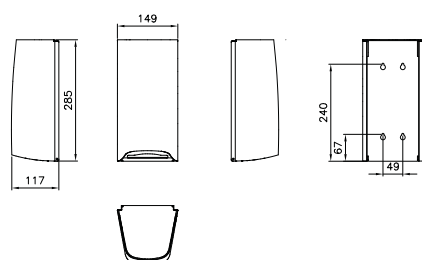


## Millinox MXS1

Soap dispenser in stainless steel, Satin finish. Capacity 1 liter soap. Suitable for refilling. Material: Stainless steel AISI 304.

ARTICLE NUMBER:

MXS1 - 1180204



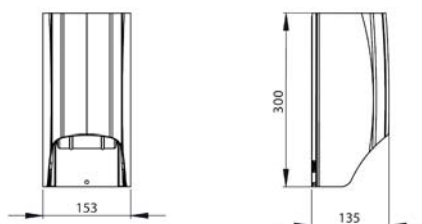
## Millinox MXT1

Toilet paper dispenser in stainless steel, Satin finish.

Material: Stainless steel AISI 304.

ARTICLE NUMBER:

MXT1 - 1180208



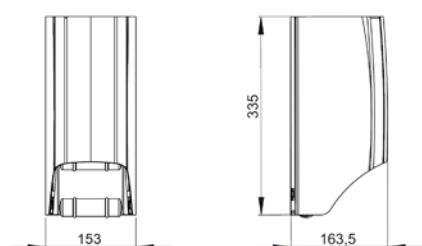
## Millinox MXT2-100

Toilet roll holder in stainless steel, Satin finish. For two rolls of max Ø 100mm.

Material: Stainless steel AISI 304.

ARTICLE NUMBER:

MXT2-100 - 1180209



## Millinox MXT2-140

Toilet roll holder in stainless steel, Satin finish. For two rolls of max Ø140mm.

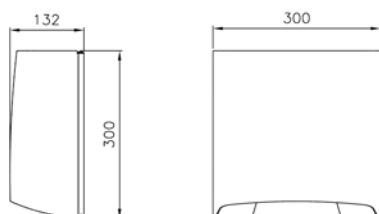
Material: Stainless steel AISI 304.

ARTICLE NUMBER:

MXT2-140 - 1180210



# Millinox - Sanitary accessories

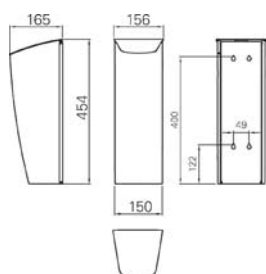


## Millinox MXT4

Toilet roll holder in stainless steel, satin finish. For big roll, max Ø270mm. Material: Stainless steel AISI 304.

ARTICLE NUMBER:

MXT4 - 1180211

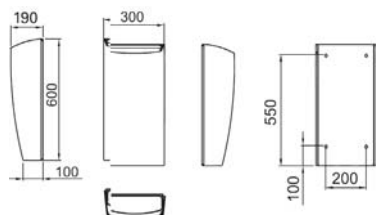


## Millinox MXA1

Waste bin in stainless steel with cover, satin finish. For sanitary towels. Capacity 30 liter. Material: Stainless steel AISI 304.

ARTICLE NUMBER:

MXA1 - 1180212

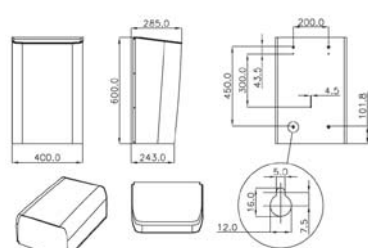


## Millinox MXA3

Waste bin in stainless steel without cover, satin finish. For sanitary towels. Capacity 30 liter. Material: Stainless steel AISI 304.

ARTICLE NUMBER:

MXA3 - 1180213

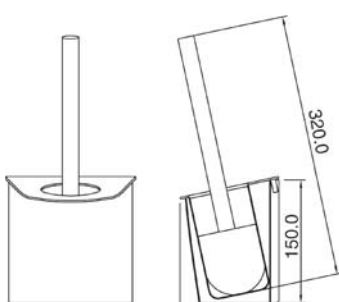


## Millinox MXA5

Waste bin in stainless steel without cover, satin finish. For sanitary towels. Capacity 60 liter. Material: Stainless steel AISI 304.

ARTICLE NUMBER:

MXA5 - 1180214



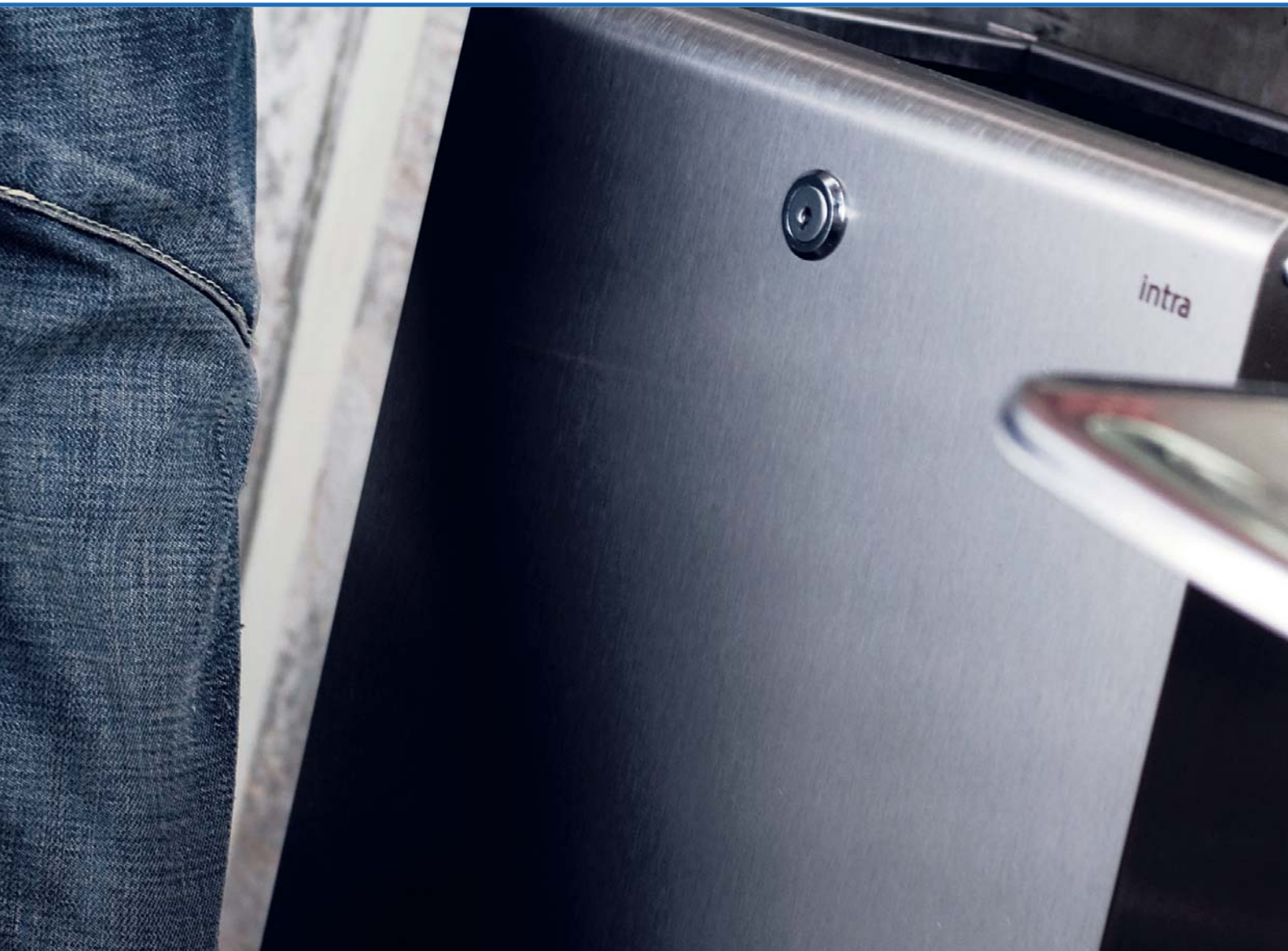
## Millinox MXTB

Toilet brush holder in stainless steel, satin finish. Supplied complete with nylon brush with handle in stainless steel. Material: Stainless steel AISI 304.

ARTICLE NUMBER:

MXTB - 1180215

# Icon - Sanitary accessories



## Clean lines

Icon is a series designed by Odd Thorsen with simple, clean lines. A brushed surface enhances the clean design.

All of the products are made from stainless steel, a durable and hygienic material that is maintenance free and easy to keep clean.

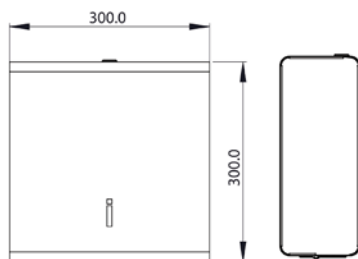
# Icon - Sanitary accessories



These solid and vandal proof accessories are amongst others, mounted in the Central Station of Oslo.



# Icon - Sanitary accessories

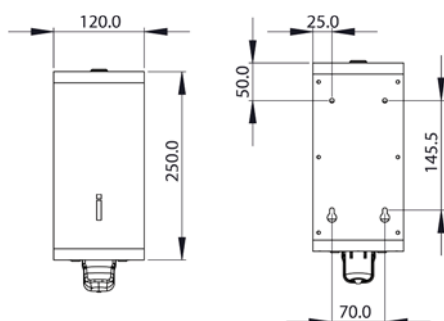


## Icon ICPMM

Paper dispenser for wall mounting in stainless steel, satin finish. Suitable for all standard paper sizes. With refill window. Material: Stainless steel AISI 304.

ARTICLE NUMBER:

ICPMM - 1180224

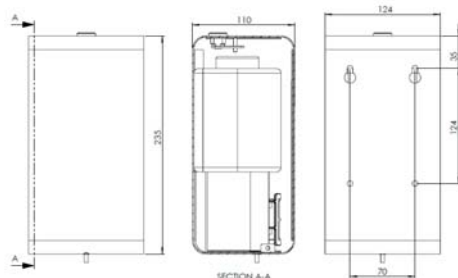


## Icon ICS1M

Soap dispenser in stainless steel, satin finish. Capacity 1 liter soap. Suitable for refilling. Material: Stainless steel AISI 304.

ARTICLE NUMBER:

ICS1M - 1180225

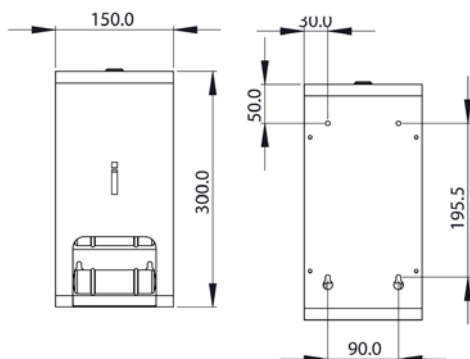


## Icon ICSE

New! ICON electrical, touch free soap dispenser in stainless steel. Capacity 0.9 liter soap. Suitable for refilling. Run by 4 x 1,5 V AA batteries. Material: Stainless steel AISI 304.

ARTICLE NUMBER:

ICSE - 1180229



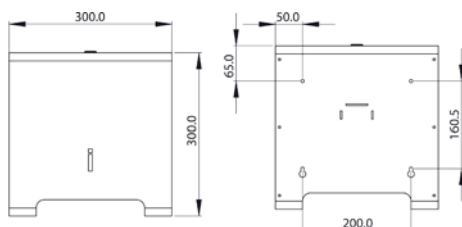
## Icon ICT2

Toilet roll holder in stainless steel, satin finish. For two rolls of max Ø 105mm. Material: Stainless steel AISI 304.

ARTICLE NUMBER:

ICT2 - 1180226

# Icon - Sanitary accessories

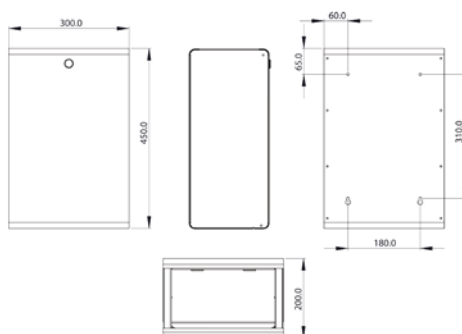


## Icon ICT4

Toilet roll holder in stainless steel, satin finish. For big roll, max Ø270mm.  
Material: Stainless steel AISI 304.

ARTICLE NUMBER:

ICT4 - 1180080

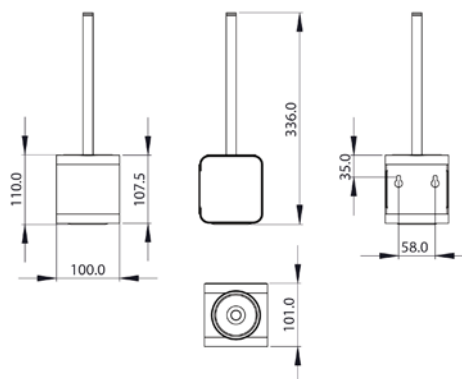


## Icon ICA3

Waste bin without cover in stainless steel, satin finish. Capacity 27 liter.  
Material: Stainless steel AISI 304.

ARTICLE NUMBER:

ICA3 - 1180082



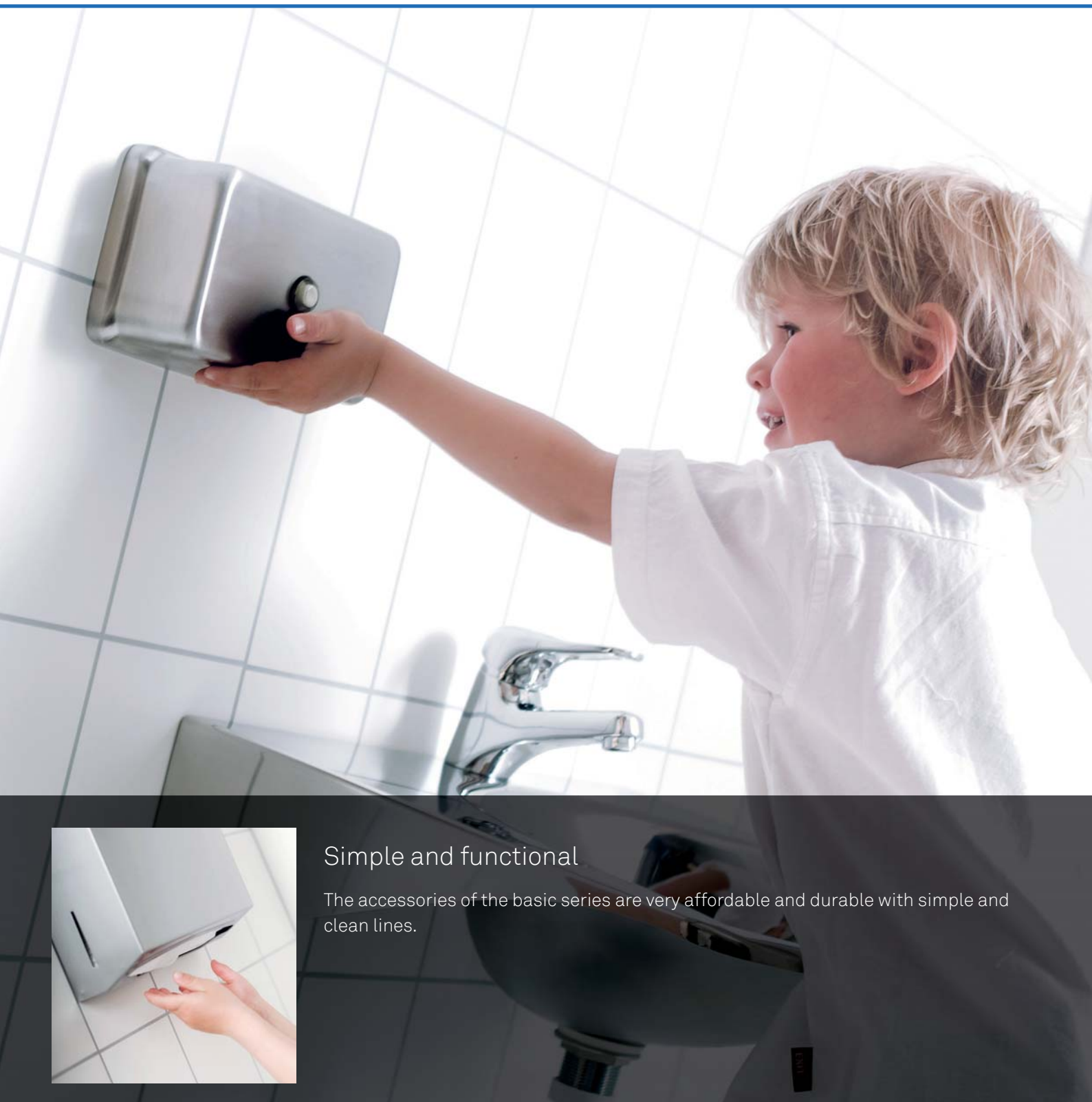
## Icon ICTB

Toilet brush holder in stainless steel. Supplied complete with nylon brush with handle in stainless steel. Material: Stainless steel AISI 304.

ARTICLE NUMBER:

ICTB - 1180230

# Basic - Sanitary accessories

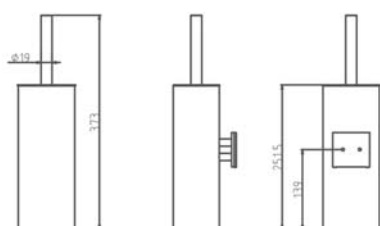


## Simple and functional

The accessories of the basic series are very affordable and durable with simple and clean lines.



# Basic - Sanitary accessories

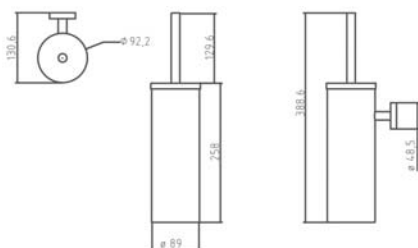


## Toilet brush oval, EA601

Stainless steel toilet brush holder with high polished finish. Material: Stainless steel AISI 201.

ARTICLE NUMBER:

EA601 - 1180073

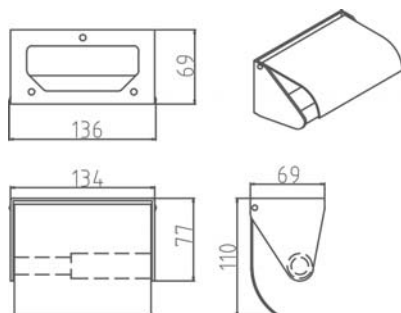


## Toilet brush round, EA602

Stainless steel toilet brush holder with brushed finish. Material: Stainless steel AISI 304.

ARTICLE NUMBER:

EA602 - 1180074

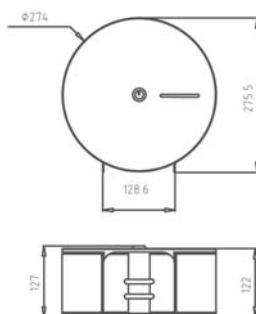


## Toilet Roll Holder, EA101

Stainless steel toilet roll holder with brushed finish. Suitable for 1 roll. Material: Stainless steel AISI 304.

ARTICLE NUMBER:

EA101 - 1180075

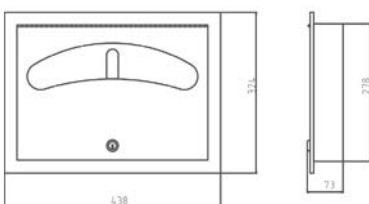


## Jumbo toilet Roll Holder, EA102

Stainless steel toilet roll holder, equipped with key lock. Suitable for 1 roll with a capacity of 250 m. 2-ply tissue, with a core of 40 – 55 mm. Material: Stainless steel AISI 304.

ARTICLE NUMBER:

EA102 - 1180076



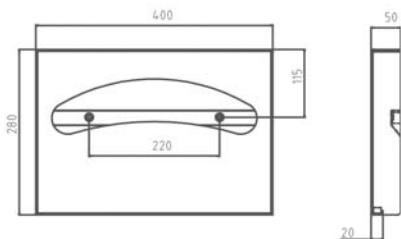
## Recessed Toilet Seat Cover Dispenser, EA104

Stainless steel toilet seat cover dispenser with a capacity of 500 toilet seat covers. Equipped with key lock. Material: Stainless steel AISI 304.

ARTICLE NUMBER:

EA104 - 1180077

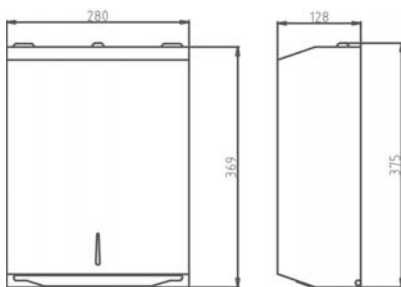
# Basic - Sanitary accessories



## Toilet seat cover dispenser, EA105

Stainless steel toilet seat cover dispenser with a capacity of 250 toilet seat covers.  
Material: Stainless steel AISI 304.

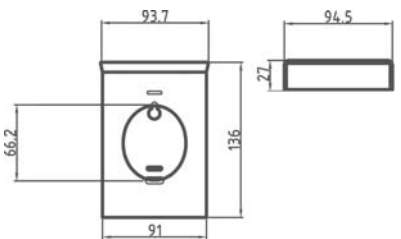
ARTICLE NUMBER:  
EA105 - 1180079



## Paper towel dispenser, EA106

Stainless steel paper towel dispenser with a capacity of 450 pieces c-fold or 600 pieces multifold paper towels. Equipped with key lock. Material: Stainless steel AISI 304.

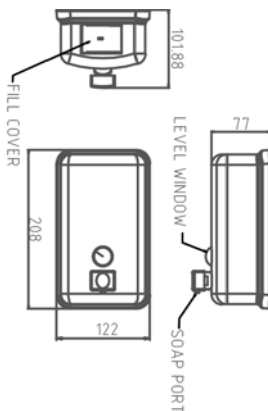
ARTICLE NUMBER:  
EA106 - 1180081



## Hygienic bag dispenser, EA107

Stainless steel hygiene bag dispenser. Material: Stainless steel AISI 304.

ARTICLE NUMBER:  
EA107 - 1180082

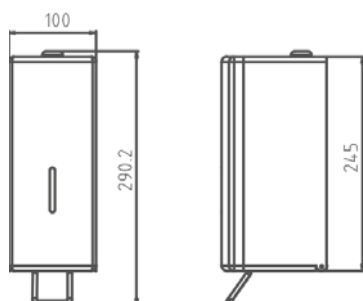


## Soap dispenser, EA130

Stainless steel soap dispenser with key lock. Capacity 1,2 liter. Material: Stainless steel AISI 304.

ARTICLE NUMBER:  
EA130 - 1180083

# Basic - Sanitary accessories

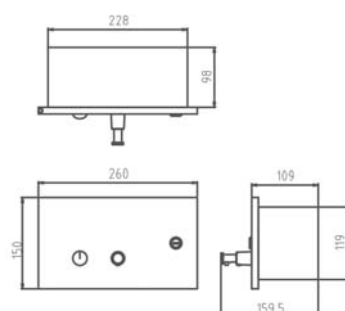


## Soap dispenser, EA131

Stainless steel soap dispenser with key lock and separate plastic container on the inside. Capacity 1 liter. Material: Stainless steel AISI 304.

ARTICLE NUMBER:

EA131 - 1180084

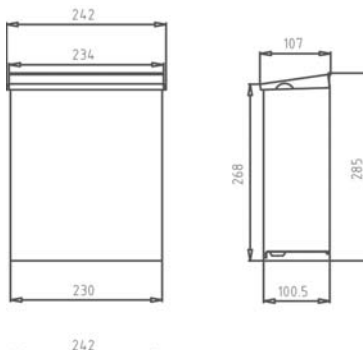


## Recessed Soap Dispenser, EA132

Recessed soap dispenser with key lock for refill. Capacity 1,2 liter. Material: Stainless steel AISI 304.

ARTICLE NUMBER:

EA132 - 1180085

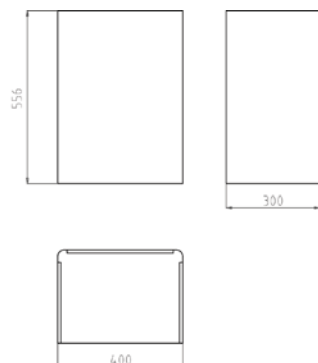


## Waste bin, EA202

Stainless steel waste bin with a capacity of 7 liter. Material: Stainless steel AISI 304.

ARTICLE NUMBER:

EA202 - 1180078



## Waste bin, EA203

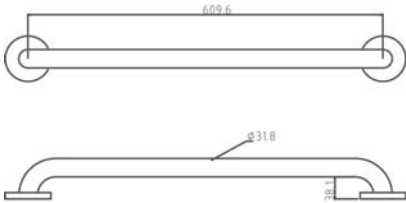
Stainless steel waste bin with capacity of 23 liter. Material: Stainless steel AISI 304.

ARTICLE NUMBER:

EA203 - 1180088



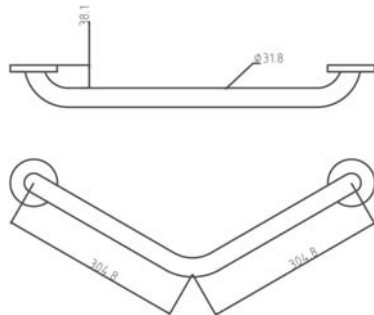
# Basic - Sanitary accessories



## Grabbar, EA301

Stainless steel grabbar with snap on flanges to conceal the mounting points. Material: Stainless steel AISI 304.

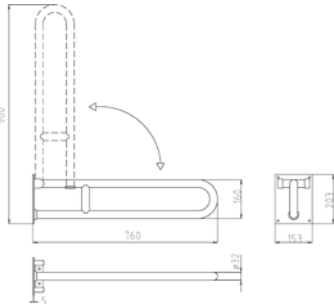
ARTICLE NUMBER: .....  
EA301 - 1180089



## Grabbar, EA302

Stainless steel grabbar with a 45° angle. Equipped with snap on flanges to conceal the mounting points. Material: Stainless steel AISI 304.

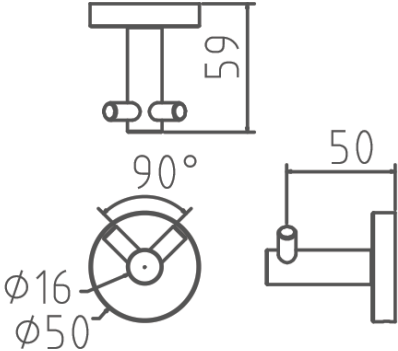
ARTICLE NUMBER: .....  
EA302 - 1180090



## Foldable Grabbar, EA303

Stainless steel foldable grabbar. Material: Stainless steel AISI 304.

ARTICLE NUMBER: .....  
EA303 - 1180091

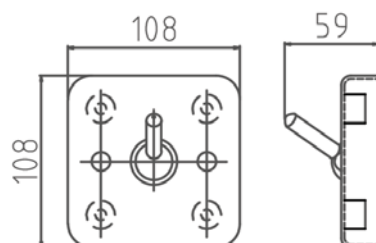


## Double Clothing Hook, EA401

Stainless steel clothing hook with brushed finish.

ARTICLE NUMBER: .....  
EA401 - 1180092

# Basic - Sanitary accessories

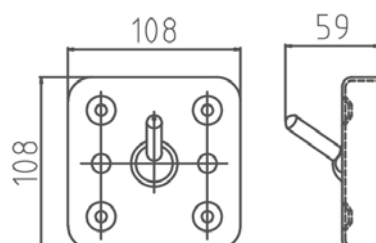


## Clothing hook (anti-suicide), EA402

Stainless steel clothing hook with anti-suicide mechanism. Mounting through the wall. Material: Stainless steel AISI 304.

ARTICLE NUMBER:

EA402 - 1180093

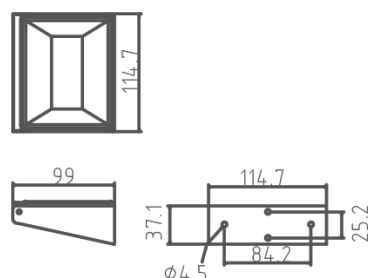


## Clothing hook (anti-suicide), EA403

Stainless steel clothing hook with anti-suicide mechanism. Mounting on the front side. Material: Stainless steel AISI 304.

ARTICLE NUMBER:

EA403 - 1180097

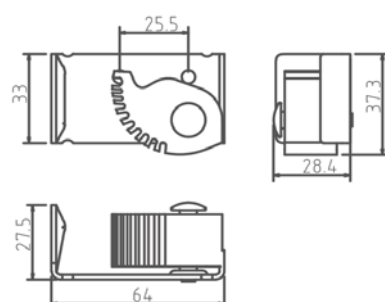


## Ashtray, EA603

Stainless steel ashtray with movable upper part, for easy cleaning and emptying. Material: Stainless steel AISI 304.

ARTICLE NUMBER:

EA603 - 1180094



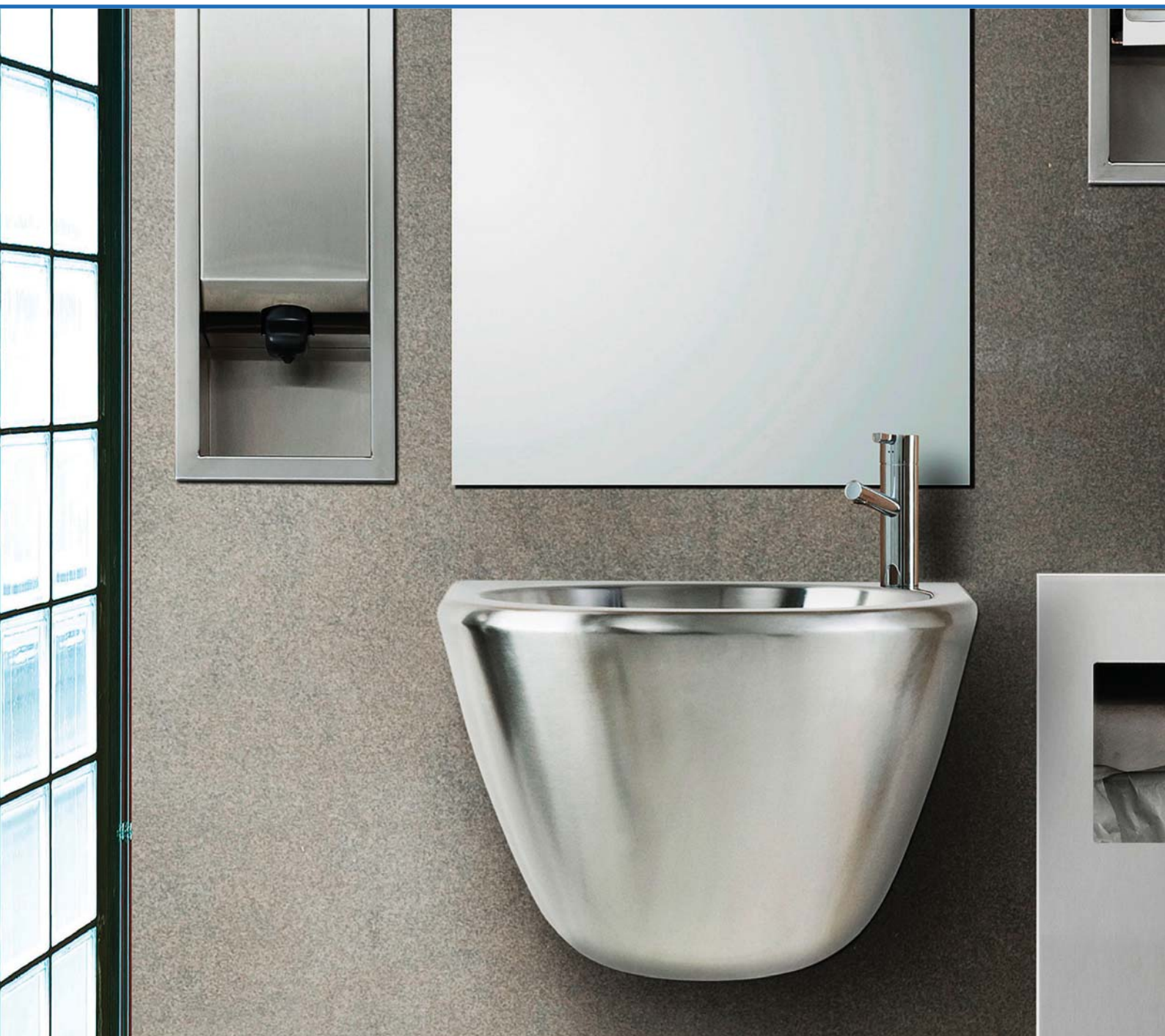
## Mol holder, EA604

Mop holder, with easy mechanism. Maximum diameter of the stick 25 mm. Material: Stainless steel AISI 304.

ARTICLE NUMBER:

EA604 - 1180096

# Public - Sanitary accessories



## Solid and stylish

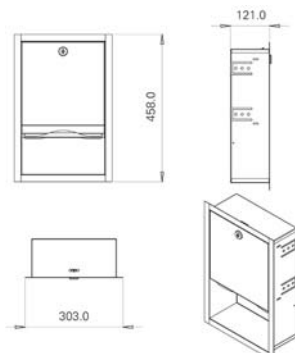
Public is a series of recessed-mounted products created for high frequency use in particularly exposed environments. The products are durable, hygienic and easy to maintain.



# Public - Sanitary accessories



# Public - Sanitary accessories

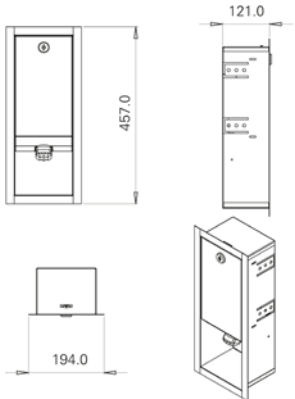


## Recessed Paper dispenser, PBPM

Recessed paper dispenser stainless steel, brushed finish. Suitable for paper sizes 250 x 115 mm. Material: Stainless steel AISI 304.

ARTICLE NUMBER:

PBPM - 1180216

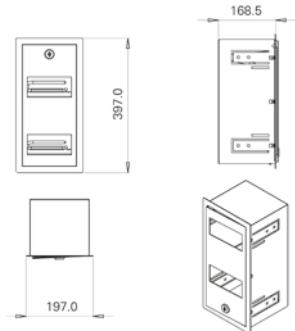


## Recessed Soap dispenser, PBS1M

Recessed soap dispenser stainless steel, brushed finish. Capacity 1 liter soap. Suitable for refilling. The dispenser is also suitable for Tork Mevon 55 soap or Tork Mevon 77 lotion. Material: Stainless steel AISI 304.

ARTICLE NUMBER:

PBS1M - 1180217

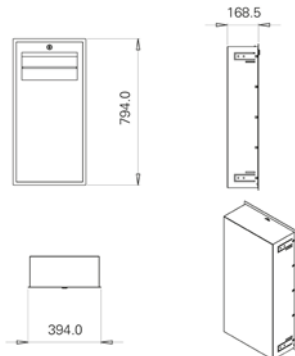


## Toilet roll holder, PBT2

Recessed toilet roll holder stainless steel, brushed finish. For two rolls of max Ø140mm. Material: Stainless steel AISI 304.

ARTICLE NUMBER:

PBT2 - 1180218



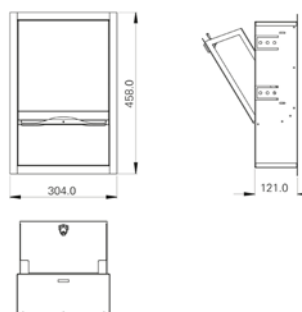
## Waste bin, PBA5

Recessed toilet waste bin stainless steel, brushed finish. Capacity 50 liter. Material: Stainless steel AISI 304.

ARTICLE NUMBER:

PBA5 - 1180219

# Public - Sanitary accessories

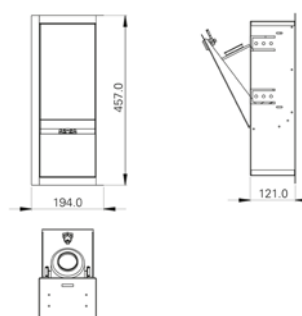


## Recessed Paper dispenser, PBSPM

Recessed paper dispenser stainless steel, brushed finish. Suitable for paper sizes 250 x 115 mm. For service from technical room. Material: Stainless steel AISI 304.

ARTICLE NUMBER:

PBSPM - 1180220

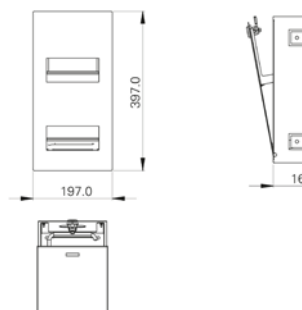


## Recessed Soap dispenser, PBSS1M

Recessed soap dispenser stainless steel, brushed finish. Capacity 1 liter soap. Suitable for refilling with Tork Mevon 55 soap or Tork Mevon 77 lotion. Service from technical room. Material: Stainless steel AISI 304.

ARTICLE NUMBER:

PBSS1M - 1180221

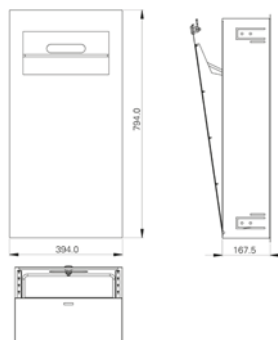


## Toilet roll holder, PBST2

Recessed toilet roll holder stainless steel, brushed finish. Service from technical room. Capacity for two rolls of max Ø140mm. Material: Stainless steel AISI 304.

ARTICLE NUMBER:

PBST2 - 1180222



## Waste bin, PBAS5

Recessed waste bin without cover stainless steel, brushed finish. Service from technical room. Material: Stainless steel AISI 304.

ARTICLE NUMBER:

PBAS5 - 1180223





Despite the drawings and texts are carefully composed, you can not derive any rights from it.  
© ELCÉE 2016