

MOUNTING TEMPLATE

SureFlo® Automatic Counter-Mounted Soap Dispensers Bobrick Models B-824 Liquid and B-828 Foam

Required Clearances:

Mounting Hole: 1-3/8" (30mm) diameter

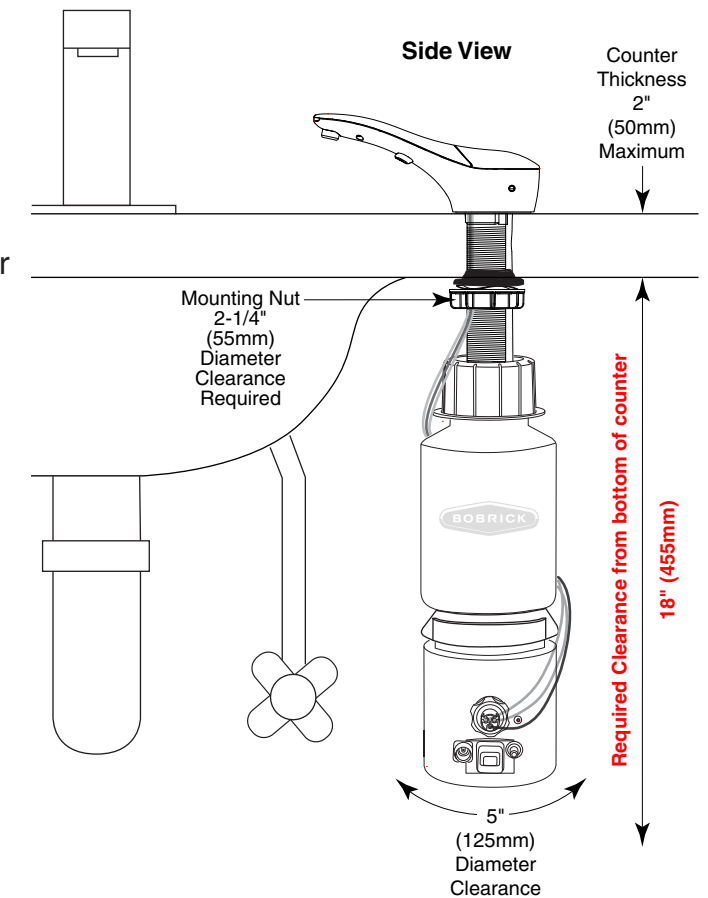
Maximum Counter Thickness: 2" (50mm)

Below Counter:

18" (455mm) vertical clearance

5" (125mm) diameter directly below mounting hole for bottle and bottom housing.

2-1/4" (55mm) diameter needed for mounting nut directly below mounting hole. If sink rim below the counter is within the clearance area, use a spacer to ensure mounting nut is firmly tightened against, bottom of the counter.



Instructions:

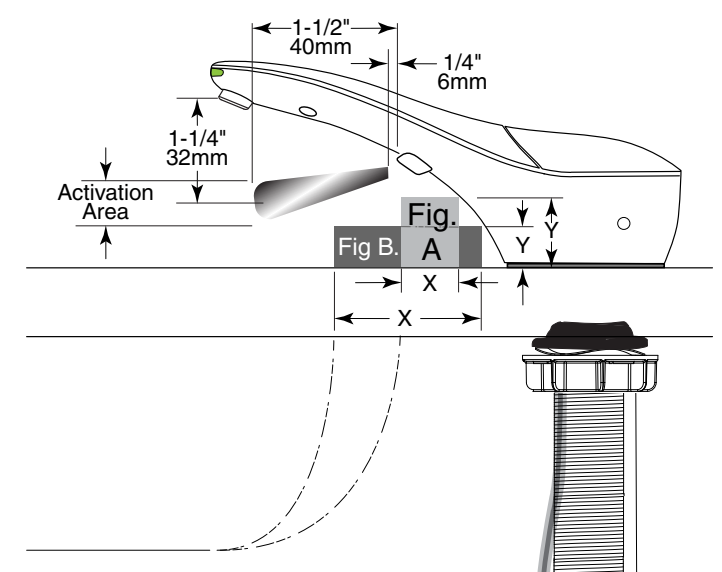
1. Using template, locate mounting hole position (on left or right side). Ensure sink and plumbing fixtures DO NOT interfere with dispenser above or below the counter (refer to clearances).
2. Drill 1-3/8" (35mm) diameter hole.

Sinks with Rim Over the Counter Area:

Unit is not compatible with a sink rim greater than maximums. See Fig A and B.

Fig. A X = 1-1/2" (40mm) Maximum
Y = 1" (25mm) Maximum

Fig. B X = 2-1/2" (65mm) Maximum
Y = 1/2" (12.7mm) Maximum



CAUTION:

Rim must not come into contact with activation area.



In the U.S.A.: BOBRICK WASHROOM EQUIPMENT, INC.
200 Commerce Drive, Clifton Park, New York 12065-1350 • Tel: (518) 877-7444 • FAX: 518-877-5029
11611 Hart Street, North Hollywood, California 91605-5882 • Tel: (818) 982-9600 • FAX: 818-503-9287
or email: BobrickCustomerService@bobrick.com

In Canada: BOBRICK WASHROOM EQUIPMENT COMPANY
45 Rolark Drive, Scarborough, Ontario M1R 3B1 • FAX: (877) 423-8555
or email: BobrickCustomerService@bobrick.com

MOUNTING TEMPLATE

LEFT SIDE

RIGHT SIDE

View from Top of Counter

View from Top of Counter

Recommended Mounting Distance
to Finish Face of Wall

Between 6" to 8" (150 to 205mm)

Empfohlener Montageabstand zur
fertigen Wandoberfläche

von 150 bis 205 mm

Drill
1-3/8" (35mm)
Diameter Hole

2-1/2" to 3"
(65 to 75mm)
from Sink Rim
to center
of Mounting Hole

65 bis 75 mm
vom
Waschbeckenrand
bis zur Mitte der
Lochbohrung

Bohrung
mit Durchmesser
von 35 mm

6"
(150mm)

7"
(175mm)

8"
(205mm)

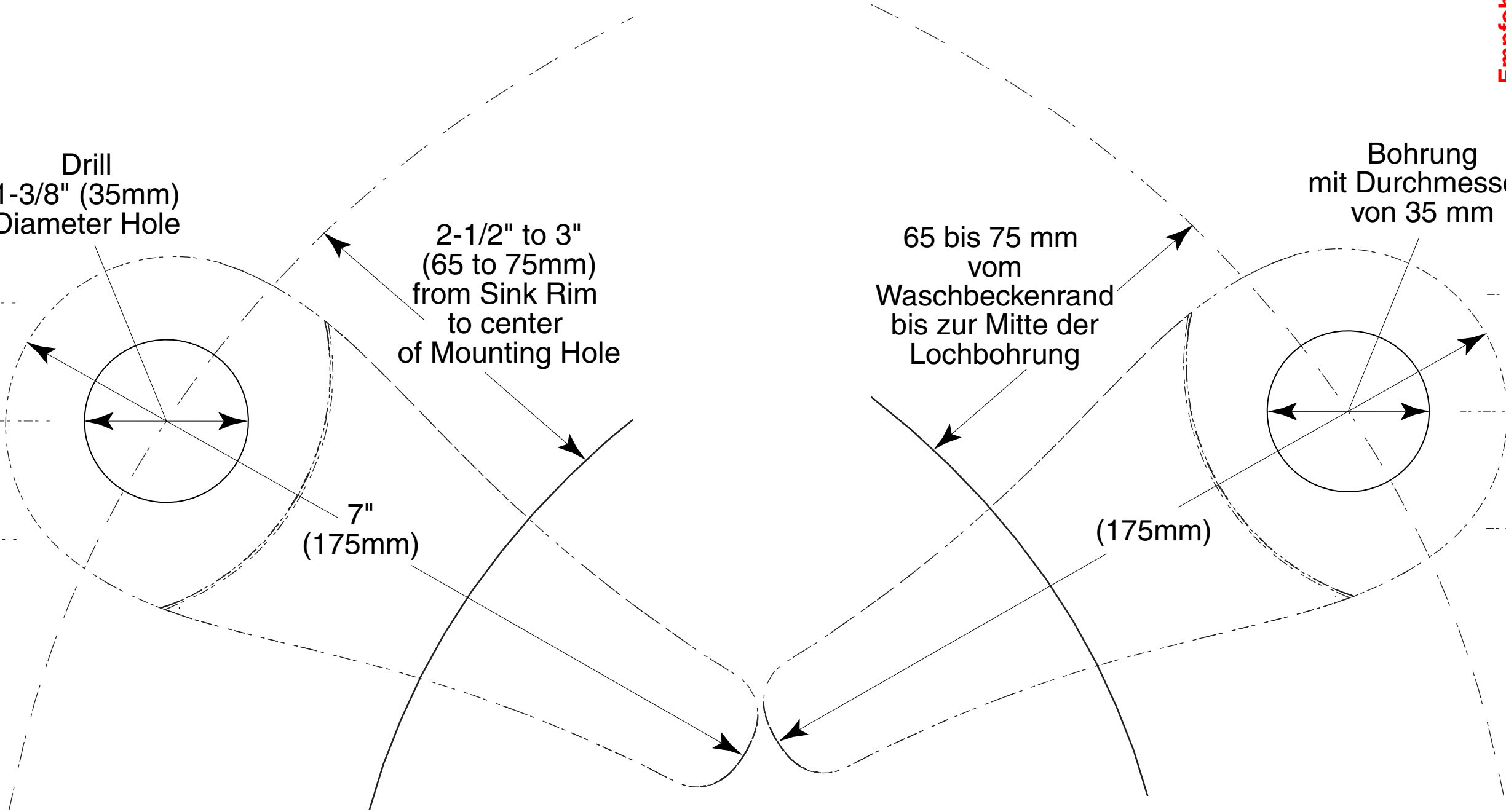
(150mm)

(175mm)

(205mm)

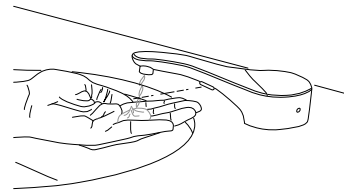
7"
(175mm)

(175mm)

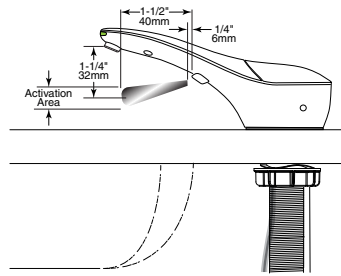


To Operate:

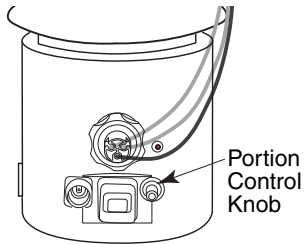
- 1. Prime Unit** – After filling dispenser, plug in power to start prime. If unit is plugged in prior to filling dispenser, place hand under spout within sensor location to start prime.



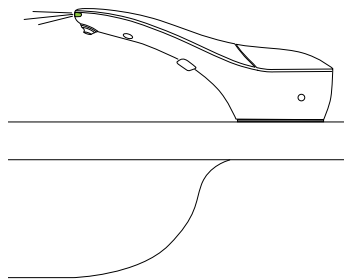
- 2. Standard Dispense** – Place hand under spout within the sensor location for approximately 1 second to dispense controlled amount of liquid hand soap.



- 3. Adjusting amount of soap dispensed** – Depending on viscosity of liquid soap used, unit may dispense between 0.4 ml to 3 ml of soap. Unit is preset at factory for maximum output. To reduce output, rotate Portion Control Knob counter-clockwise to dispense desired amount of soap.

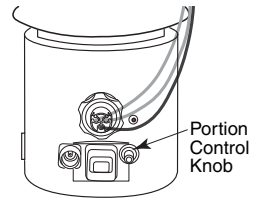


- 4. LED Light Indicators** – When activated, solid green LED will light. If green light is flashing, remove hand to allow unit to reset, then activate again. Flashing red LED light indicates time to replace batteries.



Routine Cleaning and Maintenance:

Using a damp cloth, wipe the chrome-plated exterior of the dispenser daily. Periodically (about 3 to 6 months), it is recommended to flush the system with lukewarm water for cleaning and maintenance.



- When minimal amount of soap is left in the bottle, fill dispenser with lukewarm water from top to dilute soap.
- Press on Automatic System Flush Button to flush the system.
- Once unit is flushed, press Automatic System Flush Button again to stop dispensing.
- Fill unit with fresh soap, and dispense as usual.

Troubleshooting:

- Pump loses prime (requires more than one activation to get soap).
 - Disconnect fiber optic cables from Bottom Housing.
 - Unscrew Bottle Cap and remove Bottle.
 - Check to be sure Duckbill Valve is in its location per picture (Refer to Step #9 in Instructions)
 - Order 822-35 duckbill if it is missing.
- Soap dispenser does not dispense soap, but you can hear motor running. The green LED lights up when hands are under spout.
 - Press the Automatic System Flush Button until soap comes out
 - Press Automatic System Flush Button again to turn it off
- Soap dispenser does not dispense soap and you cannot hear motor running. The green LED does not light up when hands are under spout.
 - Be sure power is supplied to unit.
 - Make sure Fiber Optic Nut is tight on Fiber Optic Port.

Warranty:

SureFlo Automatic Liquid Soap Dispenser is warranted to be free from defects in workmanship and material under normal usage from the date of purchase for a period of 3 years.



B-824 Liquid



In the U.S.A.: **BOBRICK WASHROOM EQUIPMENT, INC.**
 200 Commerce Drive, Clifton Park, New York 12065-1350 • Tel: (518) 877-7444 • FAX: 518-877-5029
 6901 Tujunga Ave., North Hollywood, California 91605-5882 • Tel: (818) 982-9600 • FAX: 818-503-9287
 or email customerservice@bobrick.com

In Canada: **BOBRICK WASHROOM EQUIPMENT COMPANY**
 45 Rolark Drive, Scarborough, Ontario M1R 3B1 • FAX: (877) 423-8555

© 2015 by Bobrick Washroom Equipment, Inc.
 Form No. 824-191 r6/24/15 Printed in U.S.A.

SureFlo® Automatic, Counter-Mounted Soap Dispenser

INSTRUCTIONS FOR INSTALLATION, OPERATION & MAINTENANCE

BOBRICK MODEL B-824 LIQUID SOAP DISPENSER

Tools required: Phillips Head Screw Driver

Clearances and Mounting Requirements:

- 1-3/8" (35mm) diameter mounting hole required.
- Minimum 18" (430mm) vertical clearance needed below the counter.
- 5" (125mm) diameter clearance needed below the mounting hole to accommodate bottle and bottom housing.
- Minimum 2-1/4" (55mm) diameter clearance needed for Mounting nut directly below the counter to clear sink rim.
- Recommend drilling mounting hole 6" to 8" (150 to 205mm) from the wall, and 2-1/2" to 3" (65 to 75mm) from sink rim.



Scan For SureFlo Installation and Maintenance Instructions.

For New Installation:

- Refer to mounting template for drilling locations (Form No. 824-207).

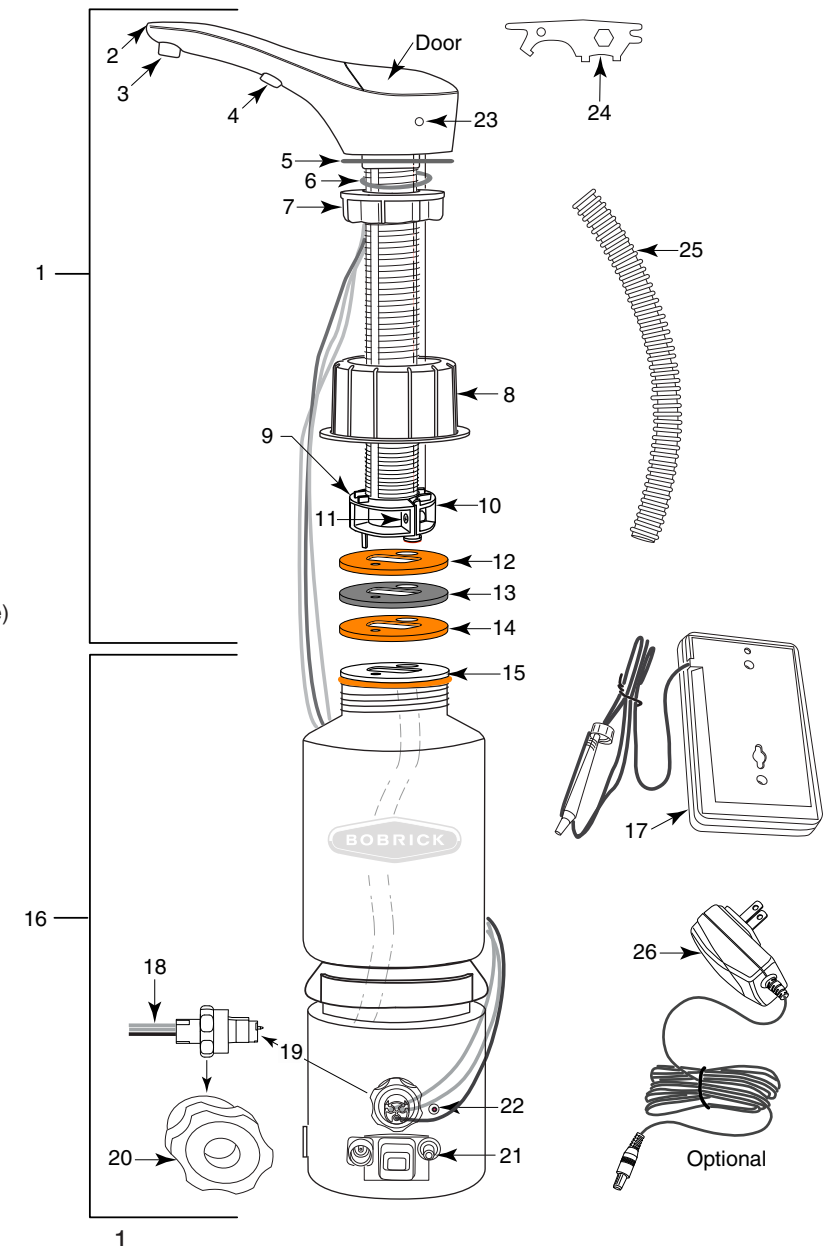
For Retrofit:

- Remove existing dispenser(s).
- Clean area.
- Ensure hole is 1-3/8" (35mm) diameter.
- If necessary, enlarge opening using appropriate hole saw. For granite/marble counters, recommend using a diamond hole saw (consult with stone and granite specialist). If needed, mounting hole should be offset to clear the sink rim. The Mounting nut requires 2-1/4" (55mm) diameter clearance directly below the counter.

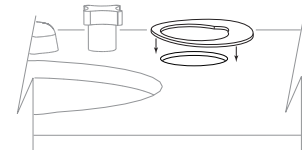
Parts List:

Item	Description
1	Top Assembly with Spout, Door and Shank
2	LED Light Pipe
3	Liquid Nozzle Tip
4	Fiber Optic Insert with Sensor Lenses
5	Rubber Counter Gasket
6	Wave Washer
7	Mounting Nut
8	Bottle Cap
9	Retainer
10	Retainer Back
11	Screw
12	Rubber QC Gasket
13	Stainless Steel Washer
14	Rubber QC Gasket
15	Adapter
16	Bottom Housing Assembly (includes Soap Bottle)
17	Battery Pack (Requires (4) "D" cell alkaline batteries not included)
18	(3) Fiber Optic Cables for Sensor and LED Light Pipe
19	Fiber Optic Connector Tip Assembly
20	Fiber Optic Nut
21	Portion Control Knob
22	Automatic System Flush Button
23	Key Hole
24	BobKey
25	Fiber Optic Cable Cover
26	Mounting Template (Form No. 824-207)
27	Optional: A/C Adapter Kit with U. S. Plug

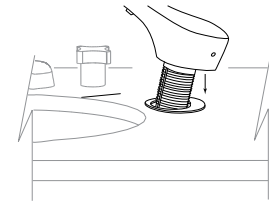
Order Part No. 3974-57 (for UK, Europe and Australia, order additional plug kit, part no. 3974-58)



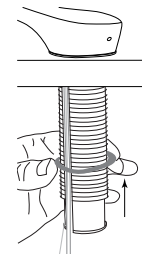
Installation:



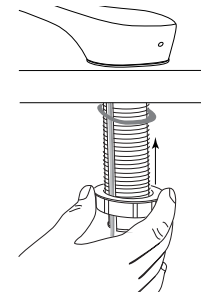
1. Place Counter Gasket over mounting hole to align with profile of dispenser.



2. Insert Shank with tube and all Fiber Optic Cables carefully through mounting hole.

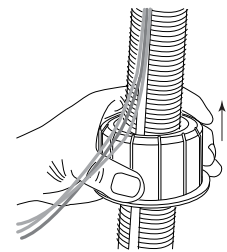


3. Install Wave Washer on Shank from below counter.
NOTE: Make sure Fiber Optic Cables are **INSIDE** Wave Washer.

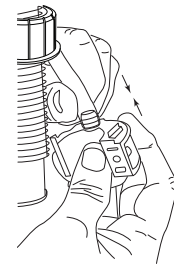


4. Install Mounting Nut on Shank and screw on to Shank. [Minimum 2-1/4" (55mm) diameter clearance needed below the counter for the mounting nut].

NOTE: Make sure Fiber Optic Cables are **INSIDE** Mounting Nut. Do not tighten completely until the end of installation.

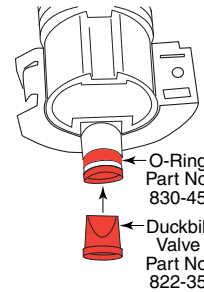


5. Place Bottle Cap over Shank. Ensure Fiber Optic Cables are on the outside of the Bottle Cap and tubing is inside Bottle Cap.

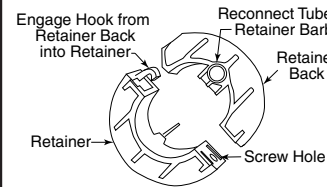


6. Insert tube from the Top Assembly with Spout and Shank onto Retainer Back with Bottle Cap remaining above.

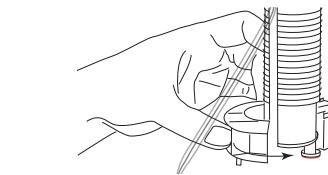
NOTE: Do not use any tools to assemble tubing onto barbs. Lubricate tube end or barb with soap to ease assembly.



7. Place Retainer Back into grooves of Shank. Ensure Duckbill valve is inserted on the bottom of the Retainer barb and O-Ring is in place.



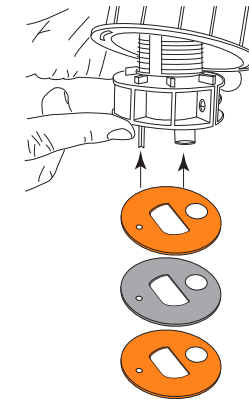
8. Connect and rotate Retainer Back to Back Retainer. Ensure Fiber Optic Cables are on the outside of the Retainer Back.



9. Insert screw and tighten retainers together.

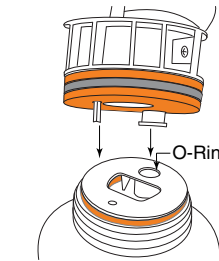
Replacement Parts List

Part Name	Part No.
- Top Housing Assembly Liquid	824-325
- Bottom Housing Assembly Liquid	824-350
- A/C Adapter	3974-57
- International Assortment Plugs (U. K., Europe, Australia)	3974-58
- D Size Battery Pack (Batteries not included)	824-241
- Nozzle Tip Replacement Kit Liquid	824-210
- Installation Hardware Packet	824-343



12. On the bottom of the Retainer, place Rubber QC Gasket, Stainless Steel Washer and Rubber QC Gasket.

NOTE: Ensure big hole and little hole are aligned properly with Retainer prongs.

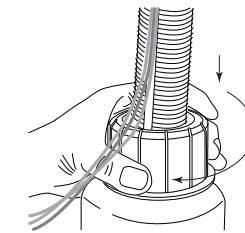


13. Insert Bottle with Gasket, Washer, and Gasket to the Adapter ensuring prongs go in appropriate holes in the bottle.

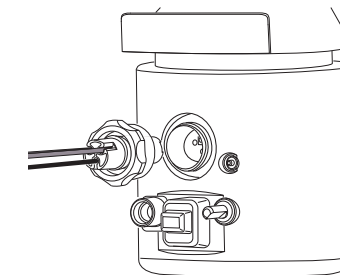
NOTE: Ensure O-ring is seated in the Adapter.

12. Slide Bottle Cap down over Bottle threads and tighten clockwise. and then turn an additional 3/4" turn to seal connection.

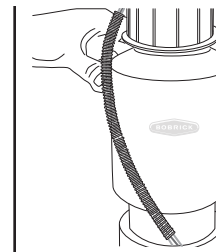
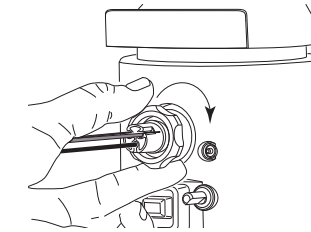
CAUTION: DO NOT bend or kink Fiber Optic Cables



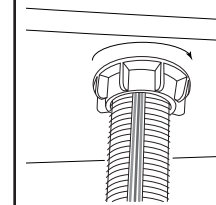
13. Insert Fiber Optic Connector Tip into Bottom Housing. Keyed feature on Connector Tip ensures Fiber Optic Cables are always located correctly.



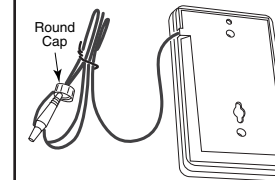
14. Thread Fiber Optic Nut onto Connector Port and tighten completely.



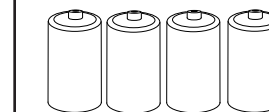
15. Place Fiber Optic cable cover over loose fiber optics to conceal.
NOTE: DO NOT bend or kink Fiber Optic Cables.



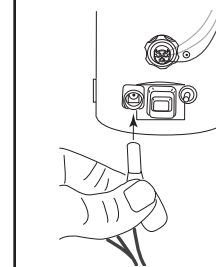
16. Ensure Mounting Nut is tightened against bottom of counter. Make sure Fiber Optic Cables are not between the underside of the counter and top of Mounting Nut. See Steps 3 and 4.



17. Mount Battery Pack on wall nearest dispenser. Mounting hardware is inside the Battery Pack. * Round Cap on plug is not required for this model, pull back prior to plugging into port.

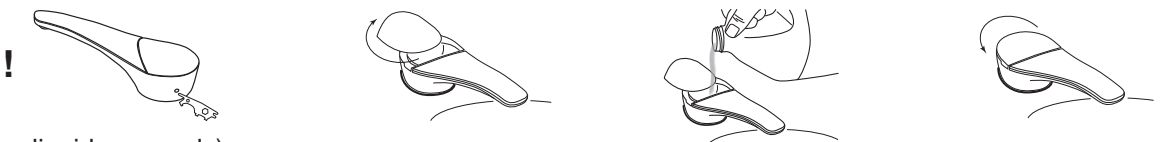


18. Install 4 "D" cell Alkaline batteries.



19. Plug Power Supply into bottom housing base.

TOP FILL ONLY !



Filling Instructions: (use liquid soap only)

Unit will dispense Bulk Liquid Soap within a viscosity range of 100 to 19,000 cP.

1. Insert tip of BobKey provided into opening of concealed locking mechanism to disengage door.
2. Door will disengage and rotate clockwise for filling from the top.
3. Fill dispenser with commercially marketed bulk liquid hand soap (**Do not use foam liquid or lotion soap**).
4. Close door counter-clockwise to lock in place.