

Kid's Seating Menu



OPEN 24 HOURS

Serving up Classic Koala Kare Seating
& Introducing New Favorites



The Best Seat in the House

Helping operators of public establishments equip their operations to accommodate the needs of caregivers and their children is what Koala Kare Products is all about. We're proud to be the world's leading provider of safe and innovative commercial childcare products for over 25 years.

KIDSITTER® KB866/KB877/KB888

This 2 in 1 product provides the safety and comfort of a high chair and an infant seat cradle. This highly durable commercial product serves as a high chair and can easily be converted to an infant seat cradle by changing the position of the high chair seat. Lift the seat in an upward movement and rotate the seat in the direction of the leg opening (opposite side of the instructional label). Seat will rest between the legs of the chair.

The KidSitter® is available in multiple color combinations, making this design friendly with restaurant decors. Choose from Brown, Grey and Tan legs and Black, Brown, Grey, Red and Blue seats. Available with and without wheels.



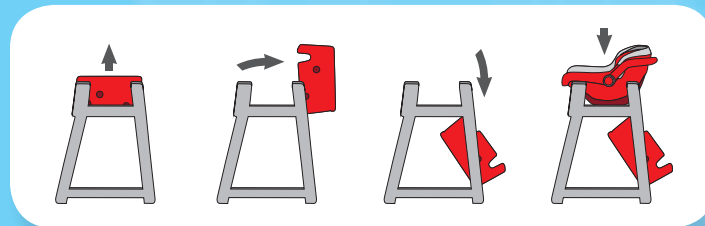
Dimensions: 22 $\frac{3}{8}$ " W x 26 $\frac{3}{4}$ " H x 22" D (568 x 679 x 559 mm)

Weight: 14 lbs (6.4 kg)

Materials: HDPE

Leg Colors: Grey, Brown and Tan

Seat Colors: Grey, Black, Red, Blue and Brown



DINER HIGH CHAIR KB850

This chair is a restaurant staple with its updated design on the traditional plastic high chair. Color choices quietly integrate this chair into quick service restaurants and casual dining restaurant settings. Provides a useful handle for easy carry. Clean lines and durable material make for quick and easy cleaning. Optional tray (KB851) is available in brown and black. Available with and without wheels, assembled and unassembled.

Dimensions: 22 $\frac{1}{4}$ " W x 29 $\frac{1}{4}$ " H x 21 $\frac{5}{8}$ " D (565 x 743 x 549 mm) **Weight:** 12 lbs (5.4 kg)

Materials: HDPE

Colors: Grey and Brown



CLASSIC HIGH CHAIR KB103

The Classic High Chair is manufactured for high traffic, quick service restaurants. Sturdy, seamless plastic is easy to clean and sanitize. Two recessed back wheels enable easy and safe movement. Stackable for easy storage. Optional tray (KB104) can be snapped vertically behind the chair when not in use.

Dimensions: 19 $\frac{1}{2}$ " W x 33 $\frac{3}{4}$ " H x 23 $\frac{1}{2}$ " D (495 x 857 x 597 mm) **Weight:** 19 lbs (8.6 kg)

Materials: HDPE

Colors: Grey, Red and Blue

Koala High Chairs



DESIGNER HIGH CHAIR KB105

Sleek design and color choices match modern restaurant design and décor. Constructed of seamless, solid HDPE plastic, which is more durable and easy to clean. Textured surface resists scuffing, chipping and scratching. There are no crevices or seams for food to collect. Chair has a small footprint in the dining area and is stackable as a space saver. Table height chair allows a seated child to eat off a standard restaurant table without the need for a tray. Curved design reduces potential liability by preventing chair from being turned upside down and used unsafely to balance an infant carrier. Meets the ASTM and EN High Chair Standards.



Dimensions:
16¾" W x 29½" H x 21¾" D
(425 x 749 x 553 mm)

Weight: 12 lbs (5.4 kg)

Materials: HDPE

Colors: Black, Red, Grey, and Brown



ECO CHAIR KB833

A truly “green” high chair manufactured from 100% post-consumer plastic. Smooth surfaces allow for quick and simple cleaning. Table height chair allows a seated child to eat at a standard restaurant table without the need for a tray. Chairs stack neatly for optimal storage. Available assembled and unassembled.

Dimensions: 6½" W x 30 ¼" H x 23¼ " D (419 x 768 x 591 mm) **Weight:** 15 lbs (6.8 kg)

Materials: HDPE

Colors: Black, Grey and Sand



WOODROW HIGH CHAIR KB800

This mortise and tenon construction provides sophistication to the Woodrow high chair. Edges and corners are rounded to help prevent chipping. Available in four colors to match most decors. Chairs stack neatly for optimal storage.

Dimensions: 19" W x 27 ½" H x 20 " D (483 x 699 x 508 mm) **Weight:** 16 lbs (7.26 kg)

Materials: Rubberwood

Colors: Light, Dark, Black and Mahogany

Boosters



BOOSTER BUDDY KB116/KB117

Designed for restaurants, theatres, and beauty salons. Seamless seat is durable and easy to maintain and clean. Handle is built-in for portability and storage. Dual seating sides offers a 6" (15.2 cm) lift on one side and a 4" (10.2 cm) lift on the other side. Features a built in cup and snack holder. Available in 2 Packs (KB117-xx) and 5 Packs (KB116-xx) with and without strap. Large and Small stands can be purchased separately.

Dimensions: 25½" W x 30" H x 21" D (64.8cm W x 76.2cm H x 53.3cm D) **Weight:** 11 lbs (5kg)

Materials: HDPE **Colors:** Black, Red, Blue and Green



RESTAURANT BOOSTER KB854/KB855

This timeless booster offers a dual height selection. Anti-skid bumpers help to prevent movement of the booster seat. Stacks neatly for optimal storage. Available in 1 Packs (KB854-xx) and 4 Packs (KB855-xx).

Dimensions: 15½" W x 7 7⁄8" H x 12¼" D (394 x 200 x 311 mm) **Weight:** 5 lbs (2.3 kg)

Materials: HDPE **Colors:** Grey, Blue and Brown



BOOSTERCHAIR KB327

The BoosterChair offers increased child comfort with a smooth contoured shape, rounded seat back and arm rests. Sleek and stylish, the booster matches modern restaurant décor. Strap on the back of the seat is designed to be attached to an adult dining chair. No crevices or seams to trap food and dirt. Contains Microban® antimicrobial protection, which inhibits the growth of odor causing bacteria. ASTM compliant. Sold as a 2 Pack.

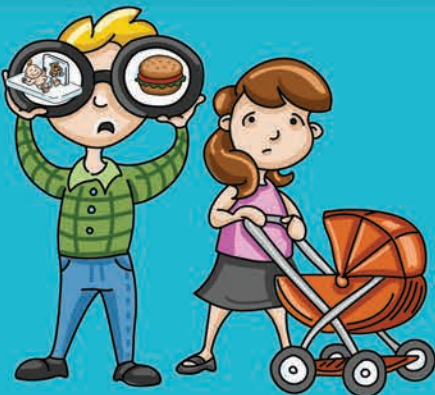


Dimensions: 16¼" W x 7½" H x 11½" D (413 x 191 x 292 mm)

Weight: 11 lbs (5kg)

Materials: HDPE

Colors: Black and Brown

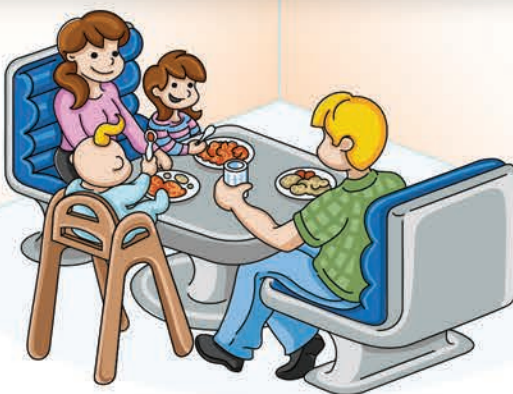


95% of parents seek out establishments that have child accommodation amenities.

Over 90% expect to find high chairs in casual sit-down and quick service restaurants

Parents are more loyal, visit more often, & spend more time & money at establishments with child accommodation amenities.

87% have used booster seats while out in public.





Colorful Choices

INFANT SEAT KRADLE KB115

Safely holds infant carriers at table height, while the family dines. The unique design serves to eliminate the unsafe act of balancing an infant carrier on an upside-down high chair. Lightweight kradle folds to compact size for quick storage. The removable mesh holder rod allows for the mesh portion to be machine washed.



Dimensions: 25½" W x 30" H x 21" D (648 x 762 x 533 mm)

Materials: Heavy-duty nylon sling, reinforced cables, tubular steel legs

Weight: 13 lbs (5.9kg)

Colors: Black, Brown and Blue/White



To see a list of available replacement parts, please visit koalabear.com.

Koala Color Selection

Koala Kare seating products come in a variety of colors to match decor. Refer to each product for standard colors. Please use two-digit color suffix following model number when ordering.



01 - Grey

02 - Black

03 - Red

04 - Blue

06 - Green

07 - Yellow

09 - Brown

20 - Light

22 - Black

24 - Dark

29 - Mahogany

99 - Blue/White



Koala Kare Products

A Division of Bobrick

6982 S. Quentin St., Centennial, CO 80112-3945

Main 303.539.8300 Toll Free 888.733.3456 Fax 303.539.8399

koalabear.com